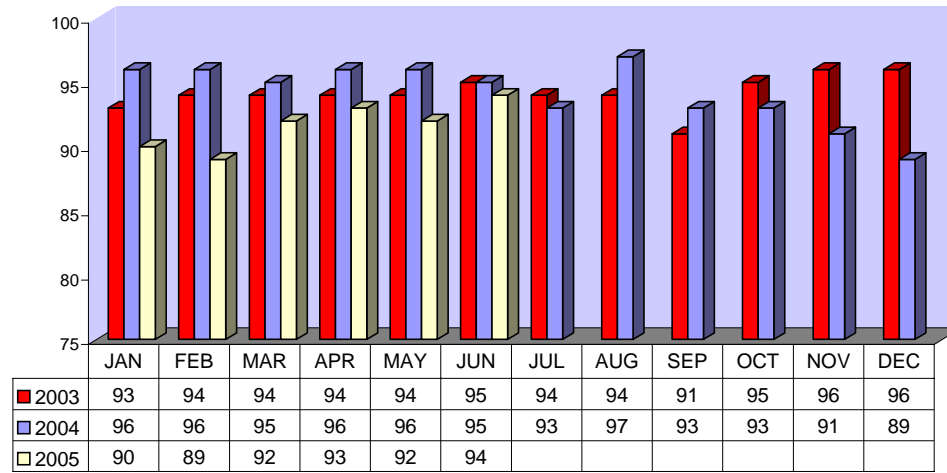


Fixed Route On Time Performance For June 2005

<i>Line</i>	<i>Total Line Checks</i>	<i>Number On Time</i>	<i>Percent On Time</i>	<i>Number Late</i>	<i>Percent Late</i>	<i>Number Ahead</i>	<i>Percent Ahead</i>	<i>Total On Time</i>	<i>Percent On Time</i>
1	601	527	88%	56	9%	18	3%	545	91%
9 (18A)	128	123	96%	5	4%	0	0%	123	96%
10	163	145	89%	18	11%	0	0%	145	89%
12	197	164	83%	31	16%	2	1%	166	84%
13	197	182	92%	10	5%	5	3%	187	95%
14	147	137	93%	8	5%	2	1%	139	95%
15	257	244	95%	12	5%	1	0%	245	95%
16	392	362	92%	15	4%	15	4%	377	96%
17	51	43	84%	8	16%	0	0%	43	84%
18	93	88	95%	4	4%	1	1%	89	96%
19	209	200	96%	8	4%	1	0%	201	96%
20	103	92	89%	9	9%	2	2%	94	91%
21	78	76	97%	2	3%	0	0%	76	97%
22	270	261	97%	5	2%	4	1%	265	98%
25	94	86	91%	2	2%	6	6%	92	98%
27	241	227	94%	14	6%	0	0%	227	94%
29	64	61	95%	3	5%	0	0%	61	95%
49	113	105	93%	7	6%	1	1%	106	94%
149	48	40	83%	1	2%	7	15%	47	98%
TOTAL	3446	3163	92%	218	6%	65	2%	3228	94%

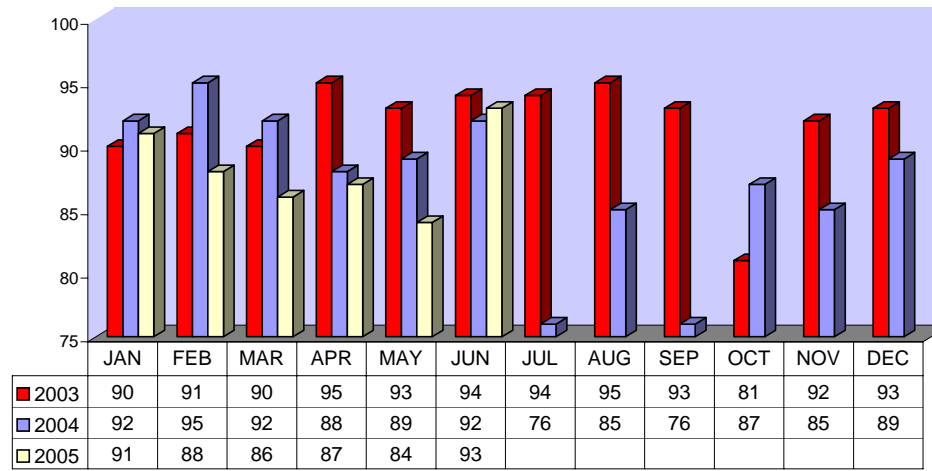
FIXED ROUTE ON TIME PERFORMANCE
(Percent On Time)



CONTRACTED DAR ON TIME PERFORMANCE FOR JUNE 2005

Dial-A-Ride	Total Line Checks	Number On Time	Percent On Time	Number Late	Percent Late	Number Early	Percent Early	Total On Time	Percent On Time
Calimesa - Yucaipa, Redlands	10	9	90%	1	10%	0	0%	9	90%
Hemet - Homeland, Romoland, San Jacinto, Valle Vista, Winchester	3264	2914	89%	193	6%	157	5%	3071	94%
Jurupa - Belltown, Glen Avon, Pedley, Rubidoux, Mira Loma	673	584	87%	59	9%	30	4%	614	91%
Lake Elsinore - Canyon Lake, Wildomar, Quail Valley	1175	1058	90%	51	4%	66	6%	1124	96%
Moreno Valley - Canyon Springs, MAFB	2440	2055	84%	202	8%	183	8%	2238	92%
Murrieta - Temecula	1227	1073	87%	88	7%	66	5%	1139	93%
Corona - Norco	1153	980	85%	88	8%	85	7%	1065	92%
Perris - Mead Valley, Nuevo	1649	1470	89%	95	6%	84	5%	1554	94%
Sun City - Menifee	1064	957	90%	60	6%	47	4%	1004	94%
Banning - Beaumont	3	3	100%	0	0%	0	0%	3	100%
Grand Terrace - High Grove, Loma Linda, Colton, Redlands	242	201	83%	22	9%	19	8%	220	91%
Riverside - Canyon Crest, Arnold Heights, Orangecrest, Woodcrest	2961	2526	85%	235	8%	200	7%	2726	92%
TOTAL	15,861	13,830	87%	1,094	7%	937	6%	14,767	93%

CONTRACTED DAR ON TIME PERFORMANCE



CONTRACTED FIXED ROUTE ON TIME PERFORMANCE FOR JUNE 2005

Line	Total Line Checks	Number On Time	Percent On Time	Number Late	Percent Late	Number Early	Percent Early	Total On Time	Percent On Time
Route 3	108	100	93%	8	7%	0	0%	100	93%
Route 7	77	72	94%	5	6%	0	0%	72	94%
Route 8	66	58	88%	8	12%	0	0%	58	88%
Route 23	102	93	91%	9	9%	0	0%	93	91%
Route 24	81	76	94%	5	6%	0	0%	76	94%
Route 30	77	74	96%	3	4%	0	0%	74	96%
Route 31	86	78	91%	8	9%	0	0%	78	91%
Route 32	100	80	80%	19	19%	1	1%	81	81%
Route 33	93	89	96%	4	4%	0	0%	89	96%
Route 35	31	30	97%	1	3%	0	0%	30	97%
Route 36	42	42	100%	0	0%	0	0%	42	100%
Route 38	51	42	82%	9	18%	0	0%	42	82%
Route 40	40	37	93%	3	8%	0	0%	37	93%
Route 41	37	35	95%	1	3%	1	3%	36	97%
Route 42	35	34	97%	1	3%	0	0%	34	97%
Route 43	0	0	0%	0	0%	0	0%	0	0%
Route 50	36	34	100%	2	0%	0	0%	34	100%
Route 61	22	22	100%	0	0%	0	0%	22	100%
Route 74	22	19	86%	3	14%	0	0%	19	86%
Route 79	22	22	100%	0	0%	0	0%	22	100%
Route 202	22	22	100%	0	0%	0	0%	22	100%
Route 204	22	22	100%	0	0%	0	0%	22	100%
Route 206	22	22	100%	0	0%	0	0%	22	100%
Route 208	22	22	100%	0	0%	0	0%	22	100%
Jurupa Shut	203	200	99%	1	0%	2	1%	202	100%
TOTAL	1419	1325	93%	90	6%	4	0%	1329	94%

CONTRACTED
FIXED ROUTE ON TIME PERFORMANCE
(Percent On Time)

