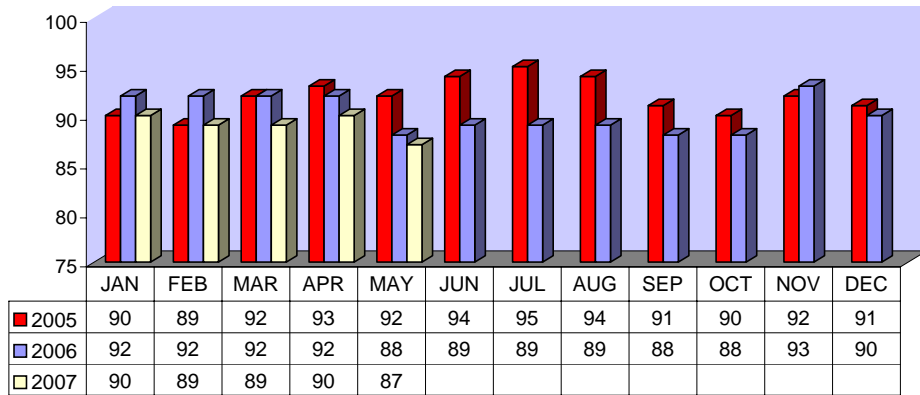


DIRECTLY OPERATED FIXED ROUTE ON TIME PERFORMANCE FOR MAY 2007

<i>Line</i>	<i>Total Line Checks</i>	<i>Number On Time</i>	<i>Percent On Time</i>	<i>Number Late</i>	<i>Percent Late</i>	<i>Number Ahead</i>	<i>Percent Ahead</i>	<i>Total On Time</i>	<i>Percent On Time</i>
1	625	567	91%	51	8%	7	1%	574	92%
4 (49)	125	116	93%	9	7%	0	0%	116	93%
9 (18A)	72	67	93%	5	7%	0	0%	67	93%
10	178	150	84%	28	16%	0	0%	150	84%
11 (149)	72	61	85%	8	11%	3	4%	64	89%
12	203	171	84%	32	16%	0	0%	171	84%
13	215	187	87%	22	10%	6	3%	193	90%
14	179	156	87%	22	12%	1	1%	157	88%
15	280	254	91%	24	9%	2	1%	256	91%
16	330	276	84%	39	12%	15	5%	291	88%
17	54	45	83%	4	7%	5	9%	50	93%
18	57	53	93%	3	5%	1	2%	54	95%
19	134	102	76%	29	22%	3	2%	105	78%
20	116	93	80%	21	18%	2	2%	95	82%
21	61	56	92%	4	7%	1	2%	57	93%
22	165	116	70%	46	28%	3	2%	119	72%
25	92	73	79%	17	18%	2	2%	75	82%
26 (206)	0	0	0%	0	0%	0	0%	0	0%
27	154	119	77%	35	23%	0	0%	119	77%
29	72	63	88%	8	11%	1	1%	64	89%
TOTAL	3184	2725	86%	407	13%	52	2%	2777	87%

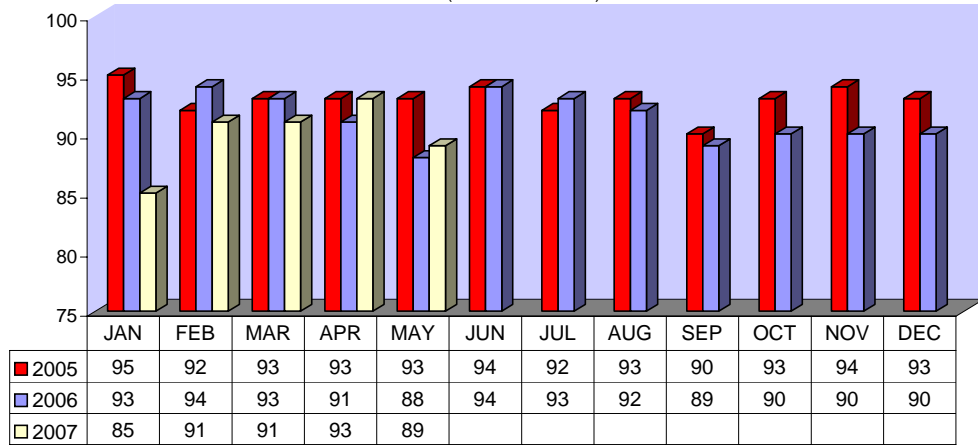
**DIRECTLY OPERATED FIXED ROUTE ON TIME PERFORMANCE
(Percent On Time)**



CONTRACTED FIXED ROUTE ON TIME PERFORMANCE FOR MAY 2007

Line	Total Line Checks	Number On Time	Percent On Time	Number Late	Percent Late	Number Early	Percent Early	Total On Time	Percent On Time	Percent On Time
Route 3	34	32	94%	2	6%	0	0%	32	94%	94%
Route 7	38	34	89%	4	11%	0	0%	34	89%	89%
Route 8	36	32	89%	4	11%	0	0%	32	89%	89%
Route 23	3	0	0%	3	100%	0	0%	0	0%	0%
Route 24	38	34	89%	4	11%	0	0%	34	89%	89%
Route 30	100	78	78%	22	22%	0	0%	78	78%	78%
Route 31	42	39	93%	3	7%	0	0%	39	93%	93%
Route 32	41	38	93%	3	7%	0	0%	38	93%	93%
Route 33	31	28	90%	3	10%	0	0%	28	90%	90%
Route 35	43	37	86%	5	12%	1	2%	38	88%	88%
Route 36	2	0	0%	2	100%	0	0%	0	0%	0%
Route 38	25	22	88%	3	12%	0	0%	22	88%	88%
Route 40	28	25	89%	3	11%	0	0%	25	89%	89%
Route 41	41	31	76%	8	20%	2	5%	33	80%	80%
Route 42	28	26	93%	2	7%	0	0%	26	93%	93%
Route 50	22	22	100%	0	0%	0	0%	22	100%	100%
Route 51	19	19	100%	0	0%	0	0%	19	100%	100%
Route 52	63	21	33%	21	33%	21	33%	42	67%	67%
Route 61	0	0	0%	0	0%	0	0%	0	0%	0%
Route 74	21	21	100%	0	0%	0	0%	21	100%	100%
Route 79	31	30	97%	1	3%	0	0%	30	97%	97%
Route 202	21	20	95%	1	5%	0	0%	20	95%	95%
Route 204	21	21	100%	0	0%	0	0%	21	100%	100%
Route 206	42	40	95%	2	5%	0	0%	40	95%	95%
Route 208	21	21	100%	0	0%	0	0%	21	100%	100%
Jurupa Shut	132	126	95%	6	5%	0	0%	126	95%	95%
TOTAL	923	797	86%	102	11%	24	3%	821	89%	89%

CONTRACTED
FIXED ROUTE ON TIME PERFORMANCE
(Percent On Time)



CONTRACTED DAR ON TIME PERFORMANCE FOR MAY 2007

Dial-A-Ride	Total Line Checks	Number Late	Percent Late	Number Early	Percent Early	Number On Time	Percent On Time
Calimesa - Yucaipa, Redlands	13	1	8%	0	0%	12	92%
Hemet - Homeland, Romoland, San Jacinto, Valle Vista, Winchester	4136	217	5%	2	0%	3919	95%
Jurupa - Belltown, Glen Avon, Pedley, Rubidoux, Mira Loma	602	57	9%	0	0%	545	91%
Lake Elsinore - Canyon Lake, Wildomar, Quail Valley	805	85	11%	1	0%	720	89%
Moreno Valley - Canyon Springs, MAFB	2785	237	9%	3	0%	2548	91%
Murrieta - Temecula	1952	239	12%	3	0%	1713	88%
Corona - Norco	1960	146	7%	10	1%	1814	93%
Perris - Mead Valley, Nuevo	1810	117	6%	0	0%	1693	94%
Sun City - Menifee	956	68	7%	2	0%	888	93%
Banning - Beaumont	5	1	20%	0	0%	4	80%
Grand Terrace - High Grove, Loma Linda, Colton, Redlands	378	40	11%	2	1%	338	89%
Riverside - Canyon Crest, Arnold Heights, Orangecrest, Woodcrest	4396	420	10%	7	0%	3976	90%
TOTAL	19,798	1,628	8%	30	0%	18,170	92%

CONTRACTED DAR ON TIME PERFORMANCE

