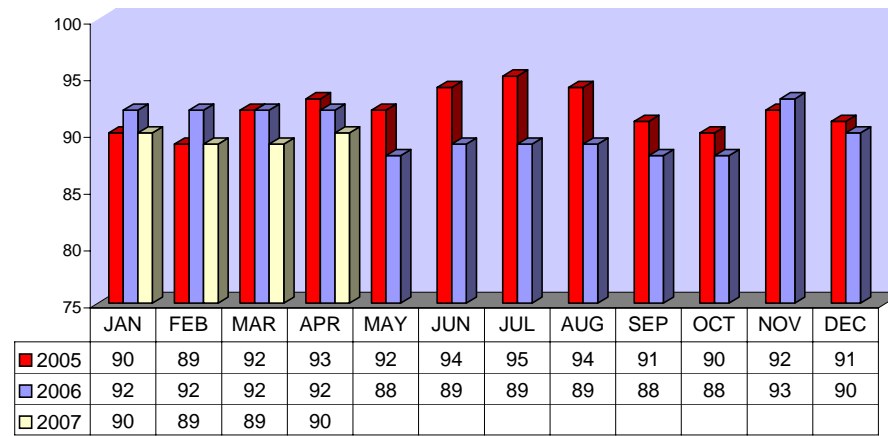


Directly Operated Fixed Route On Time Performance April 2007

<i>Line</i>	<i>Total Line Checks</i>	<i>Number On Time</i>	<i>Percent On Time</i>	<i>Number Late</i>	<i>Percent Late</i>	<i>Number Ahead</i>	<i>Percent Ahead</i>	<i>Total On Time</i>	<i>Percent On Time</i>
1	646	592	92%	36	6%	18	3%	610	94%
4	129	115	89%	13	10%	1	1%	116	90%
(49)									
9	63	60	95%	3	5%	0	0%	60	95%
(18A)									
10	191	164	86%	26	14%	1	1%	165	86%
11	74	56	76%	9	12%	9	12%	65	88%
(149)									
12	230	190	83%	39	17%	1	0%	191	83%
13	238	215	90%	19	8%	4	2%	219	92%
14	167	148	89%	14	8%	5	3%	153	92%
15	286	268	94%	15	5%	3	1%	271	95%
16	328	292	89%	24	7%	12	4%	304	93%
17	35	29	83%	0	0%	6	17%	35	100%
18	45	45	100%	0	0%	0	0%	45	100%
19	122	105	86%	17	14%	0	0%	105	86%
20	92	72	78%	16	17%	4	4%	76	83%
21	59	49	83%	10	17%	0	0%	49	83%
22	212	164	77%	41	19%	7	3%	171	81%
25	92	81	88%	7	8%	4	4%	85	92%
26	0	0	0%	0	0%	0	0%	0	0%
(206)									
27	183	135	74%	47	26%	1	1%	136	74%
29	86	83	97%	3	3%	0	0%	83	97%
TOTAL	3278	2863	87%	339	10%	76	2%	2939	90%

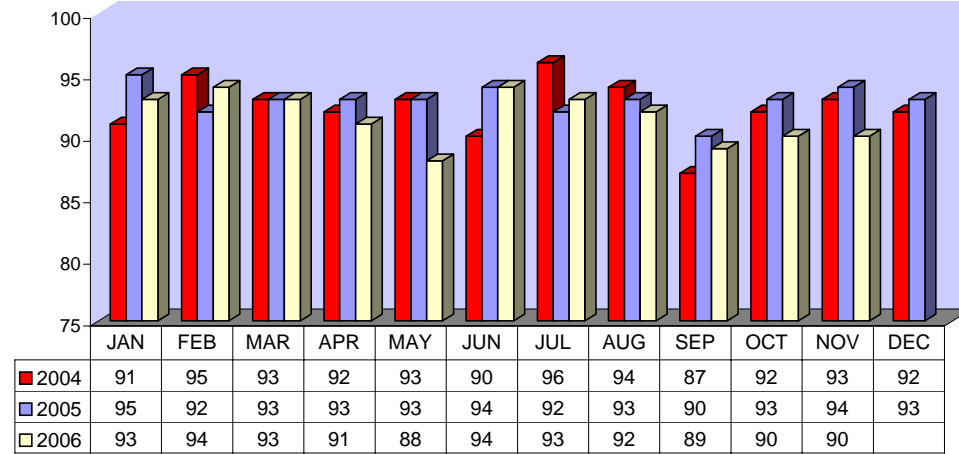
**DIRECTLY OPERATED FIXED ROUTE ON TIME PERFORMANCE
(Percent On Time)**



CONTRACTED FIXED ROUTE ON TIME PERFORMANCE FOR APRIL 2007

Line	Total Line Checks	Number On Time	Percent On Time	Number Late	Percent Late	Number Early	Percent Early	Total On Time	Percent On Time
Route 3	28	27	96%	1	4%	0	0%	27	96%
Route 7	34	31	91%	3	9%	0	0%	31	91%
Route 8	72	67	93%	5	7%	0	0%	67	93%
Route 23	37	35	95%	2	5%	0	0%	35	95%
Route 24	32	32	100%	0	0%	0	0%	32	100%
Route 30	83	74	89%	9	11%	0	0%	74	89%
Route 31	65	60	92%	4	6%	1	2%	61	94%
Route 32	43	36	84%	7	16%	0	0%	36	84%
Route 33	30	28	93%	2	7%	0	0%	28	93%
Route 35	45	40	89%	5	11%	0	0%	40	89%
Route 36	29	27	93%	2	7%	0	0%	27	93%
Route 38	26	24	92%	2	8%	0	0%	24	92%
Route 40	29	25	86%	4	14%	0	0%	25	86%
Route 41	31	26	84%	5	16%	0	0%	26	84%
Route 42	27	26	96%	1	4%	0	0%	26	96%
Route 50	22	20	91%	2	9%	0	0%	20	91%
Route 51	28	27	96%	1	4%	0	0%	27	96%
Route 61	21	21	100%	0	0%	0	0%	21	100%
Route 74	36	33	92%	1	3%	2	6%	35	97%
Route 79	23	22	96%	1	4%	0	0%	22	96%
Route 202	21	20	95%	1	5%	0	0%	20	95%
Route 204	54	48	89%	6	11%	0	0%	48	89%
Route 206	21	19	90%	2	10%	0	0%	19	90%
Route 208	71	69	97%	1	1%	1	1%	70	99%
Jurupa Shuttle	115	113	98%	2	2%	0	0%	113	98%
TOTAL	1,023	950	93%	69	7%	4	0%	954	93%

CONTRACTED
FIXED ROUTE ON TIME PERFORMANCE
(Percent On Time)



CONTRACTED DAR ON TIME PERFORMANCE FOR APRIL 2007

Dial-A-Ride	Total Line Checks	Number Late	Percent Late	Number Early	Percent Early	Number On Time	Percent On Time
Calimesa - Yucaipa, Redlands	10	0	0%	0	0%	10	100%
Hemet - Homeland, Romoland, San Jacinto, Valle Vista, Winchester	3646	182	5%	5	0%	3464	95%
Jurupa - Belltown, Glen Avon, Pedley, Rubidoux, Mira Loma	599	68	11%	0	0%	531	89%
Lake Elsinore - Canyon Lake, Wildomar, Quail Valley	735	44	6%	1	0%	691	94%
Moreno Valley - Canyon Springs, MAFB	2497	180	7%	2	0%	2317	93%
Murrieta - Temecula	1839	169	9%	1	0%	1670	91%
Corona - Norco	1894	113	6%	10	1%	1781	94%
Perris - Mead Valley, Nuevo	1709	93	5%	4	0%	1616	95%
Sun City - Menifee	956	63	7%	0	0%	893	93%
Banning - Beaumont	1	0	0%	0	0%	1	100%
Grand Terrace - High Grove, Loma Linda, Colton, Redlands	354	43	12%	0	0%	311	88%
Riverside - Canyon Crest, Arnold Heights, Orangecrest, Woodcrest	3965	381	10%	0	0%	3584	90%
TOTAL	18,205	1,336	7%	23	0%	16,869	93%

CONTRACTED DAR ON TIME PERFORMANCE

