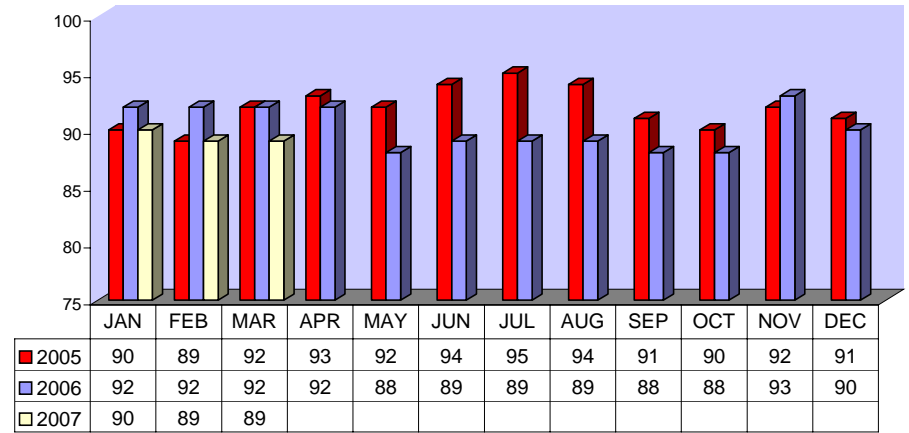


Directly Operated Fixed Route On Time Performance March 2007

<i>Line</i>	<i>Total Line Checks</i>	<i>Number On Time</i>	<i>Percent On Time</i>	<i>Number Late</i>	<i>Percent Late</i>	<i>Number Ahead</i>	<i>Percent Ahead</i>	<i>Total On Time</i>	<i>Percent On Time</i>
1	544	483	89%	47	9%	14	3%	497	91%
4	94	87	93%	7	7%	0	0%	87	93%
(49)									
9	59	56	95%	3	5%	0	0%	56	95%
(18A)									
10	147	127	86%	18	12%	2	1%	129	88%
11	70	54	77%	11	16%	5	7%	59	84%
(149)									
12	161	122	76%	37	23%	2	1%	124	77%
13	186	171	92%	13	7%	2	1%	173	93%
14	137	129	94%	4	3%	4	3%	133	97%
15	248	228	92%	15	6%	5	2%	233	94%
16	273	231	85%	24	9%	18	7%	249	91%
17	33	29	88%	1	3%	3	9%	32	97%
18	35	34	97%	1	3%	0	0%	34	97%
19	119	99	83%	18	15%	2	2%	101	85%
20	96	78	81%	17	18%	1	1%	79	82%
21	69	61	88%	7	10%	1	1%	62	90%
22	152	113	74%	38	25%	1	1%	114	75%
25	68	63	93%	2	3%	3	4%	66	97%
26	0	0	0%	0	0%	0	0%	0	0%
(206)									
27	175	130	74%	42	24%	3	2%	133	76%
29	59	55	93%	4	7%	0	0%	55	93%
TOTAL	2725	2350	86%	309	11%	66	2%	2416	89%

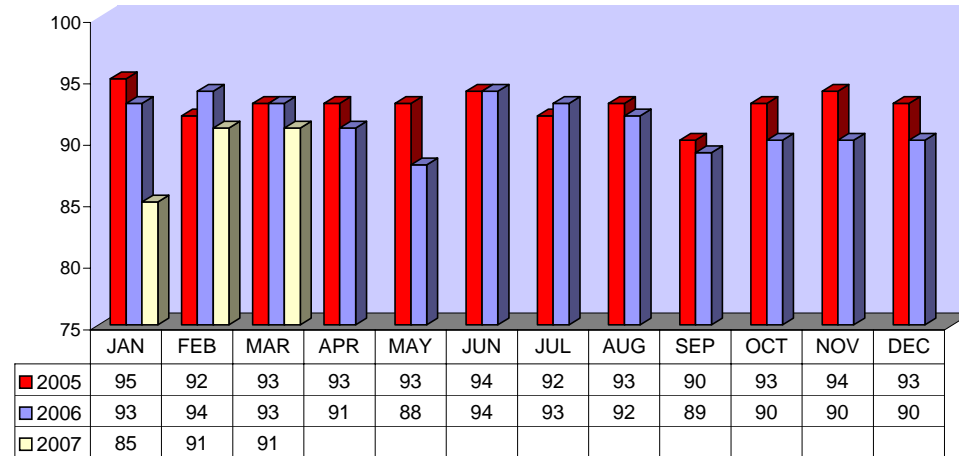
**DIRECTLY OPERATED FIXED ROUTE ON TIME PERFORMANCE
(Percent On Time)**



CONTRACTED FIXED ROUTE ON TIME PERFORMANCE FOR MARCH 2007

Line	Total Line Checks	Number On Time	Percent On Time	Number Late	Percent Late	Number Early	Percent Early	Total On Time	Percent On Time
Route 3	56	50	89%	6	11%	0	0%	50	89%
Route 7	78	70	90%	8	10%	0	0%	70	90%
Route 8	68	62	91%	6	9%	0	0%	62	91%
Route 16	41	39	95%	2	5%	0	0%	39	95%
Route 23	74	66	89%	6	8%	2	3%	68	92%
Route 24	64	58	91%	6	9%	0	0%	58	91%
Route 30	78	67	86%	10	13%	1	1%	68	87%
Route 31	37	33	89%	4	11%	0	0%	33	89%
Route 32	37	33	89%	4	11%	0	0%	33	89%
Route 33	27	24	89%	2	7%	1	4%	25	93%
Route 35	38	33	87%	5	13%	0	0%	33	87%
Route 36	29	29	100%	0	0%	0	0%	29	100%
Route 38	34	34	100%	0	0%	0	0%	34	100%
Route 40	26	22	85%	4	15%	0	0%	22	85%
Route 41	29	24	83%	5	17%	0	0%	24	83%
Route 42	26	25	96%	0	0%	1	4%	26	100%
Route 50	15	15	100%	0	0%	0	0%	15	100%
Route 51	14	14	100%	0	0%	0	0%	14	100%
Route 61	23	23	100%	0	0%	0	0%	23	100%
Route 74	35	30	86%	2	6%	3	9%	33	94%
Route 79	23	22	96%	1	4%	0	0%	22	96%
Route 202	22	22	100%	0	0%	0	0%	22	100%
Route 204	35	35	100%	0	0%	0	0%	35	100%
Route 206	23	23	100%	0	0%	0	0%	23	100%
Route 208	80	57	71%	0	0%	0	0%	57	71%
Jurupa Shuttle	149	144	97%	5	3%	0	0%	144	97%
TOTAL	1,161	1,054	91%	76	7%	8	1%	1,062	91%

CONTRACTED
FIXED ROUTE ON TIME PERFORMANCE
(Percent On Time)



CONTRACTED DAR ON TIME PERFORMANCE FOR MARCH 2007

Dial-A-Ride	Total Line Checks	Number Late	Percent Late	Number Early	Percent Early	Number On Time	Percent On Time
Calimesa - Yucaipa, Redlands	15	3	20%	0	0%	12	80%
Hemet - Homeland, Romoland, San Jacinto, Valle Vista, Winchester	3844	321	8%	1	0%	3523	92%
Jurupa - Belltown, Glen Avon, Pedley, Rubidoux, Mira Loma	684	96	14%	1	0%	588	86%
Lake Elsinore - Canyon Lake, Wildomar, Quail Valley	833	96	12%	0	0%	737	88%
Moreno Valley - Canyon Springs, MAFB	2611	302	12%	4	0%	2309	88%
Murrieta - Temecula	1902	243	13%	0	0%	1659	87%
Corona - Norco	2072	155	7%	12	1%	1917	93%
Perris - Mead Valley, Nuevo	1869	156	8%	4	0%	1713	92%
Sun City - Menifee	1015	94	9%	0	0%	921	91%
Banning - Beaumont	8	2	25%	0	0%	6	75%
Grand Terrace - High Grove, Loma Linda, Colton, Redlands	317	70	22%	0	0%	247	78%
Riverside - Canyon Crest, Arnold Heights, Orangecrest, Woodcrest	4657	642	14%	8	0%	4015	86%
TOTAL	19,827	2,180	11%	30	0%	17,647	89%

CONTRACTED DAR ON TIME PERFORMANCE

