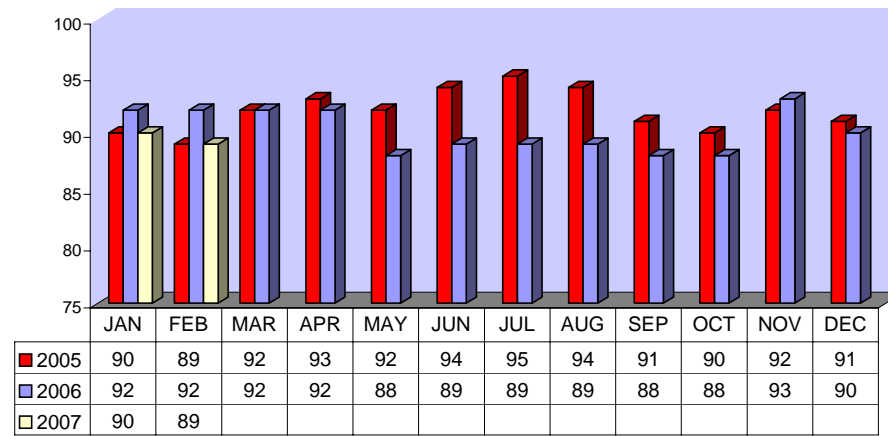


Directly Operated Fixed Route On Time Performance February 2007

<i>Line</i>	<i>Total Line Checks</i>	<i>Number On Time</i>	<i>Percent On Time</i>	<i>Number Late</i>	<i>Percent Late</i>	<i>Number Ahead</i>	<i>Percent Ahead</i>	<i>Total On Time</i>	<i>Percent On Time</i>
1	470	423	90%	32	7%	15	3%	438	93%
4 (49)	94	87	93%	7	7%	0	0%	87	93%
9 (18A)	53	47	89%	5	9%	1	2%	48	91%
10	121	104	86%	15	12%	2	2%	106	88%
11 (149)	52	35	67%	10	19%	7	13%	42	81%
12	154	123	80%	29	19%	2	1%	125	81%
13	169	153	91%	11	7%	5	3%	158	93%
14	116	95	82%	13	11%	8	7%	103	89%
15	220	201	91%	18	8%	1	0%	202	92%
16	250	222	89%	16	6%	12	5%	234	94%
17	29	26	90%	0	0%	3	10%	29	100%
18	31	28	90%	3	10%	0	0%	28	90%
19	124	102	82%	20	16%	2	2%	104	84%
20	88	74	84%	13	15%	1	1%	75	85%
21	49	45	92%	4	8%	0	0%	45	92%
22	144	96	67%	40	28%	8	6%	104	72%
25	60	50	83%	6	10%	4	7%	54	90%
26 (206)	1	0	0%	1	0%	0	0%	0	0%
27	151	109	72%	33	22%	9	6%	118	78%
29	53	51	96%	2	4%	0	0%	51	96%
TOTAL	2429	2071	85%	278	11%	80	3%	2151	89%

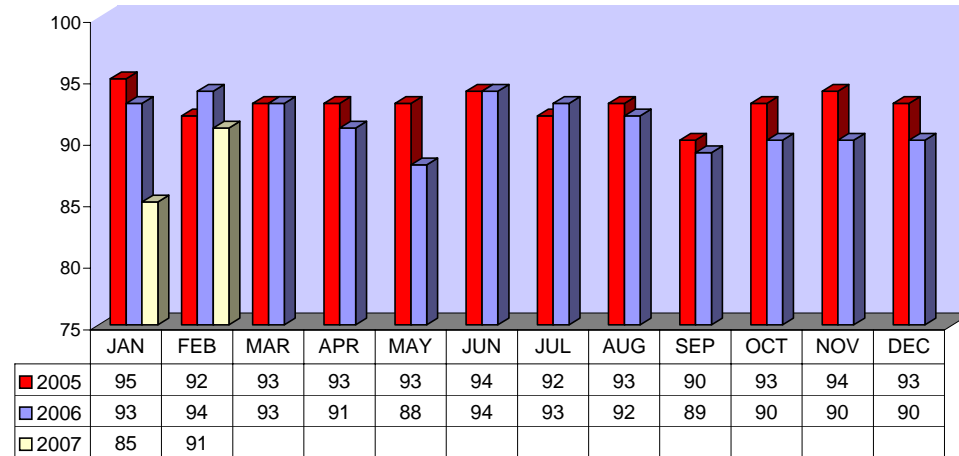
**DIRECTLY OPERATED FIXED ROUTE ON TIME PERFORMANCE
(Percent On Time)**



CONTRACTED FIXED ROUTE ON TIME PERFORMANCE FOR FEBRUARY 2007

Line	Total Line Checks	Number On Time	Percent On Time	Number Late	Percent Late	Number Early	Percent Early	Total On Time	Percent On Time
Route 3	24	21	88%	3	13%	0	0%	21	88%
Route 7	32	30	94%	2	6%	0	0%	30	94%
Route 8	31	27	87%	4	13%	0	0%	27	87%
Route 23	42	37	88%	4	10%	1	2%	38	90%
Route 24	34	29	85%	5	15%	0	0%	29	85%
Route 30	83	72	87%	11	13%	0	0%	72	87%
Route 31	33	30	91%	3	9%	0	0%	30	91%
Route 32	33	30	91%	3	9%	0	0%	30	91%
Route 33	33	29	88%	4	12%	0	0%	29	88%
Route 35	32	27	84%	3	9%	2	6%	29	91%
Route 36	25	24	96%	1	4%	0	0%	24	96%
Route 38	23	22	96%	1	4%	0	0%	22	96%
Route 40	27	24	89%	3	11%	0	0%	24	89%
Route 41	37	32	86%	3	8%	2	5%	34	92%
Route 42	25	24	96%	1	4%	0	0%	24	96%
Route 50	17	17	100%	0	0%	0	0%	17	100%
Route 51	17	17	100%	0	0%	0	0%	17	100%
Route 61	26	26	100%	0	0%	0	0%	26	100%
Route 74	20	20	100%	0	0%	0	0%	20	100%
Route 79	36	28	78%	8	22%	0	0%	28	78%
Route 202	21	19	90%	1	5%	1	5%	20	95%
Route 204	20	19	95%	1	5%	0	0%	19	95%
Route 206	31	30	97%	1	3%	0	0%	30	97%
Route 208	20	18	90%	2	10%	0	0%	18	90%
Jurupa Shuttle	74	54	73%	19	26%	1	1%	55	74%
TOTAL	121	117	97%	4	3%	0	0%	117	97%

CONTRACTED
FIXED ROUTE ON TIME PERFORMANCE
(Percent On Time)



CONTRACTED DAR ON TIME PERFORMANCE FOR FEBRUARY 2007

Dial-A-Ride	Total Line Checks	Number Late	Percent Late	Number Early	Percent Early	Number On Time	Percent On Time
Calimesa - Yucaipa, Redlands	15	4	27%	0	0%	11	73%
Hemet - Homeland, Romoland, San Jacinto, Valle Vista, Winchester	3330	270	8%	0	0%	3060	92%
Jurupa - Belltown, Glen Avon, Pedley, Rubidoux, Mira Loma	590	75	13%	0	0%	515	87%
Lake Elsinore - Canyon Lake, Wildomar, Quail Valley	773	98	13%	1	0%	675	87%
Moreno Valley - Canyon Springs, MAFB	2361	256	11%	0	0%	2105	89%
Murrieta - Temecula	1612	232	14%	1	0%	1380	86%
Corona - Norco	1803	169	9%	13	1%	1634	91%
Perris - Mead Valley, Nuevo	1651	139	8%	3	0%	1512	92%
Sun City - Menifee	901	98	11%	0	0%	803	89%
Banning - Beaumont	13	0	0%	0	0%	13	100%
Grand Terrace - High Grove, Loma Linda, Colton, Redlands	317	38	12%	0	0%	279	88%
Riverside - Canyon Crest, Arnold Heights, Orangecrest, Woodcrest	3954	556	14%	2	0%	3398	86%
TOTAL	17,320	1,935	11%	20	0%	15,385	89%

CONTRACTED DAR ON TIME PERFORMANCE

