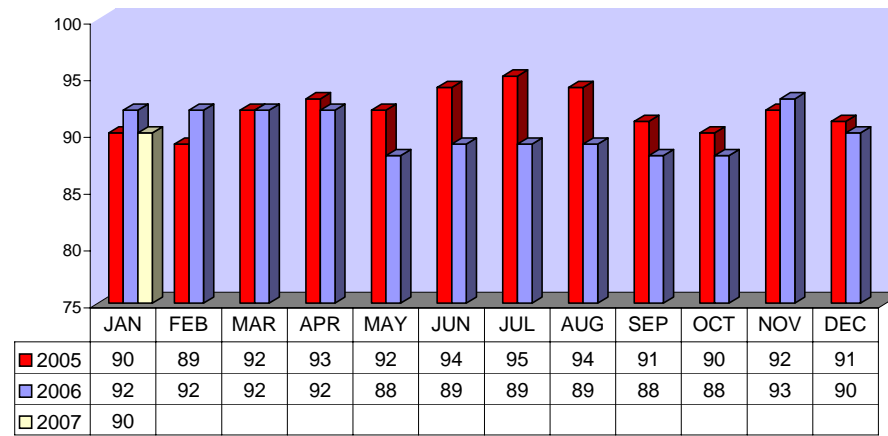


**Directly Operated Fixed Route On Time Performance January 2007**

<i>Line</i>	<i>Total Line Checks</i>	<i>Number On Time</i>	<i>Percent On Time</i>	<i>Number Late</i>	<i>Percent Late</i>	<i>Number Ahead</i>	<i>Percent Ahead</i>	<i>Total On Time</i>	<i>Percent On Time</i>
1	387	355	92%	20	5%	12	3%	367	95%
4 (49)	58	48	83%	10	17%	0	0%	48	83%
9 (18A)	66	66	100%	0	0%	0	0%	66	100%
10	112	100	89%	12	11%	0	0%	100	89%
11 (149)	44	35	80%	3	7%	6	14%	41	93%
12	118	98	83%	17	14%	3	3%	101	86%
13	132	118	89%	7	5%	7	5%	125	95%
14	88	80	91%	3	3%	5	6%	85	97%
15	161	152	94%	8	5%	1	1%	153	95%
16	243	205	84%	25	10%	13	5%	218	90%
17	31	24	77%	1	3%	6	19%	30	97%
18	29	29	100%	0	0%	0	0%	29	100%
19	113	98	87%	13	12%	2	2%	100	88%
20	91	75	82%	16	18%	0	0%	75	82%
21	41	35	85%	6	15%	0	0%	35	85%
22	137	91	66%	43	31%	3	2%	94	69%
25	52	47	90%	2	4%	3	6%	50	96%
26 (206)	0	0	0%	0	0%	0	0%	0	0%
27	160	130	81%	28	18%	2	1%	132	83%
29	42	37	88%	5	12%	0	0%	37	88%
<b>TOTAL</b>	<b>2105</b>	<b>1823</b>	<b>87%</b>	<b>219</b>	<b>10%</b>	<b>63</b>	<b>3%</b>	<b>1886</b>	<b>90%</b>

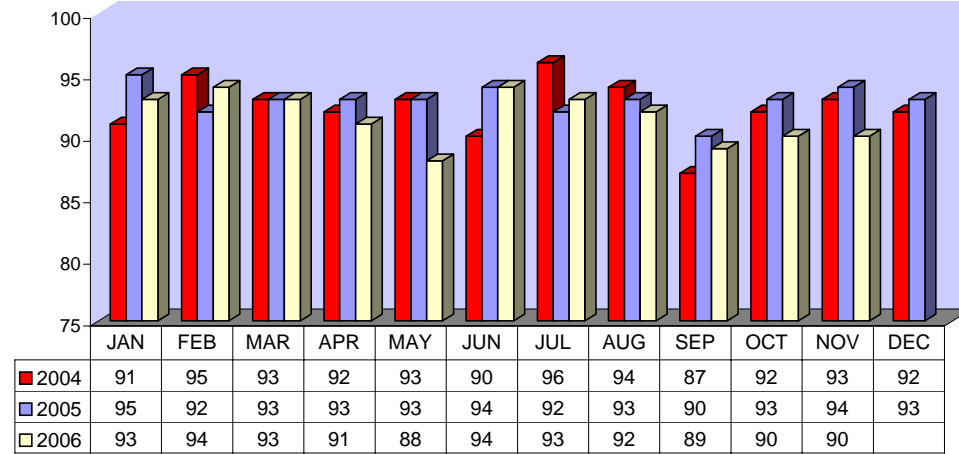
**DIRECTLY OPERATED FIXED ROUTE ON TIME PERFORMANCE  
(Percent On Time)**



**CONTRACTED FIXED ROUTE ON TIME PERFORMANCE FOR JANUARY 2007**

Line	Total Line Checks	Number On Time	Percent On Time	Number Late	Percent Late	Number Early	Percent Early	Total On Time	Percent On Time
Route 3	49	40	82%	8	16%	1	2%	41	84%
Route 7	53	43	81%	10	19%	0	0%	43	81%
Route 8	65	53	82%	12	18%	0	0%	53	82%
Route 23	45	42	93%	3	7%	0	0%	42	93%
Route 24	47	42	89%	5	11%	0	0%	42	89%
Route 30	103	84	82%	19	18%	0	0%	84	82%
Route 31	59	55	93%	4	7%	0	0%	55	93%
Route 32	47	41	87%	6	13%	0	0%	41	87%
Route 33	26	21	81%	5	19%	0	0%	21	81%
Route 35	33	30	91%	3	9%	0	0%	30	91%
Route 36	30	28	93%	2	7%	0	0%	28	93%
Route 38	37	29	78%	8	22%	0	0%	29	78%
Route 40	26	24	92%	2	8%	0	0%	24	92%
Route 41	27	23	85%	4	15%	0	0%	23	85%
Route 42	65	62	95%	3	5%	0	0%	62	95%
Route 50	24	17	71%	7	29%	0	0%	17	71%
Route 51	27	27	100%	0	0%	0	0%	27	100%
Route 61	22	22	100%	0	0%	0	0%	22	100%
Route 74	39	16	41%	23	59%	0	0%	16	41%
Route 79	23	9	39%	14	61%	0	0%	9	39%
Route 202	22	22	100%	0	0%	0	0%	22	100%
Route 204	24	24	100%	0	0%	0	0%	24	100%
Route 206	24	23	96%	0	0%	1	4%	24	100%
Route 208	68	40	59%	26	38%	2	3%	42	62%
Jurupa Shuttle	157	144	92%	13	8%	0	0%	144	92%
<b>TOTAL</b>	<b>1,142</b>	<b>961</b>	<b>84%</b>	<b>177</b>	<b>15%</b>	<b>4</b>	<b>0%</b>	<b>965</b>	<b>85%</b>

CONTRACTED  
FIXED ROUTE ON TIME PERFORMANCE  
(Percent On Time)



**CONTRACTED DAR ON TIME PERFORMANCE FOR JANUARY 2007**

<b>Dial-A-Ride</b>	<b>Total Line Checks</b>	<b>Number Late</b>	<b>Percent Late</b>	<b>Number Early</b>	<b>Percent Early</b>	<b>Number On Time</b>	<b>Percent On Time</b>
<b>Calimesa</b> - Yucaipa, Redlands	15	2	13%	1	7%	13	87%
<b>Hemet</b> - Homeland, Romoland, San Jacinto, Valle Vista, Winchester	3537	169	5%	32	1%	3368	95%
<b>Jurupa</b> - Belltown, Glen Avon, Pedley, Rubidoux, Mira Loma	617	87	14%	1	0%	530	86%
<b>Lake Elsinore</b> - Canyon Lake, Wildomar, Quail Valley	794	60	8%	4	1%	734	92%
<b>Moreno Valley</b> - Canyon Springs, MAFB	2490	202	8%	6	0%	2288	92%
<b>Murrieta</b> - Temecula	1736	151	9%	6	0%	1585	91%
<b>Corona</b> - Norco	1761	118	7%	47	3%	1643	93%
<b>Perris</b> - Mead Valley, Nuevo	1720	114	7%	12	1%	1606	93%
<b>Sun City</b> - Menifee	975	81	8%	5	1%	894	92%
<b>Banning</b> - Beaumont	15	0	0%	0	0%	15	100%
<b>Grand Terrace</b> - High Grove, Loma Linda, Colton, Redlands	282	31	11%	3	1%	251	89%
<b>Riverside</b> - Canyon Crest, Arnold Heights, Orangecrest, Woodcrest	4155	405	10%	37	1%	3750	90%
<b>TOTAL</b>	<b>18,097</b>	<b>1,420</b>	<b>8%</b>	<b>154</b>	<b>1%</b>	<b>16,677</b>	<b>92%</b>

**CONTRACTED DAR ON TIME PERFORMANCE**

