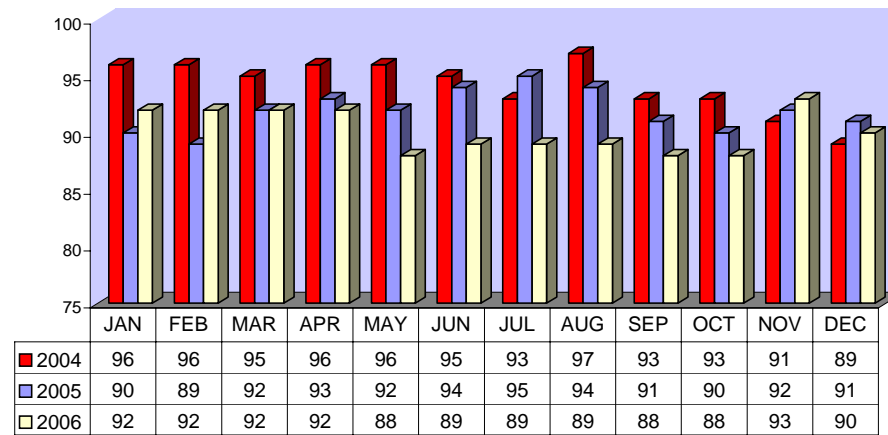


**Directly Operated Fixed Route On Time Performance December 2006**

<i>Line</i>	<i>Total Line Checks</i>	<i>Number On Time</i>	<i>Percent On Time</i>	<i>Number Late</i>	<i>Percent Late</i>	<i>Number Ahead</i>	<i>Percent Ahead</i>	<i>Total On Time</i>	<i>Percent On Time</i>
1	230	211	92%	13	6%	6	3%	217	94%
4 (49)	30	27	90%	3	10%	0	0%	27	90%
9 (18A)	43	42	98%	1	2%	0	0%	42	98%
10	76	68	89%	8	11%	0	0%	68	89%
11 (149)	44	33	75%	7	16%	4	9%	37	84%
12	82	74	90%	7	9%	1	1%	75	91%
13	67	63	94%	2	3%	2	3%	65	97%
14	62	52	84%	7	11%	3	5%	55	89%
15	97	85	88%	8	8%	4	4%	89	92%
16	154	124	81%	23	15%	7	5%	131	85%
17	32	23	72%	2	6%	7	22%	30	94%
18	29	24	83%	3	10%	2	7%	26	90%
19	97	89	92%	7	7%	1	1%	90	93%
20	49	37	76%	10	20%	2	4%	39	80%
21	27	26	96%	1	4%	0	0%	26	96%
22	93	79	85%	10	11%	4	4%	83	89%
25	26	24	92%	0	0%	2	8%	26	100%
26 (206)	0	0	0%	0	0%	0	0%	0	0%
27	127	101	80%	24	19%	2	2%	103	81%
29	31	27	87%	2	6%	2	6%	29	94%
<b>TOTAL</b>	<b>1396</b>	<b>1209</b>	<b>87%</b>	<b>138</b>	<b>10%</b>	<b>49</b>	<b>4%</b>	<b>1258</b>	<b>90%</b>

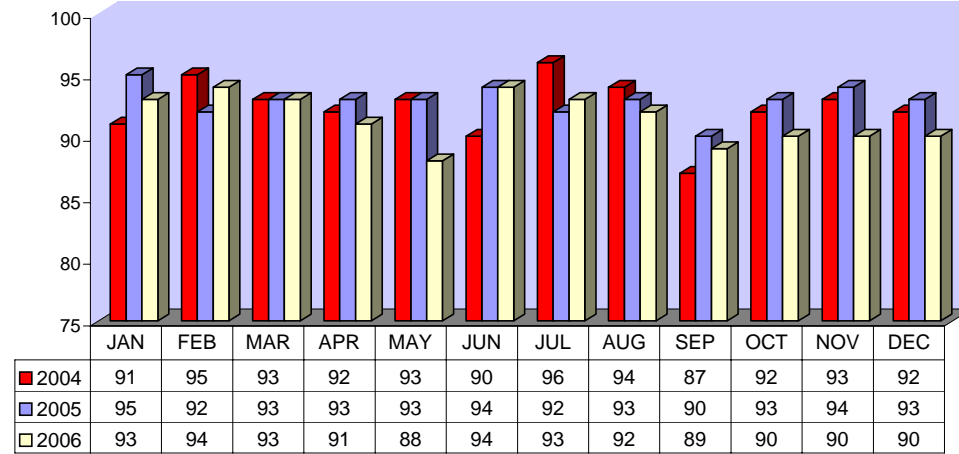
**DIRECTLY OPERATED FIXED ROUTE ON TIME PERFORMANCE  
(Percent On Time)**



**CONTRACTED FIXED ROUTE ON TIME PERFORMANCE FOR DECEMBER 2006**

Line	Total Line Checks	Number On Time	Percent On Time	Number Late	Percent Late	Number Early	Percent Early	Total On Time	Percent On Time
Route 3	44	38	86%	4	9%	2	5%	40	91%
Route 7	41	38	93%	3	7%	0	0%	38	93%
Route 8	39	36	92%	3	8%	0	0%	36	92%
Route 23	39	36	92%	3	8%	0	0%	36	92%
Route 24	43	41	95%	2	5%	0	0%	41	95%
Route 30	42	40	95%	2	5%	0	0%	40	95%
Route 31	52	49	94%	3	6%	0	0%	49	94%
Route 32	41	39	95%	2	5%	0	0%	39	95%
Route 33	32	27	84%	5	16%	0	0%	27	84%
Route 35	36	33	92%	3	8%	0	0%	33	92%
Route 36	34	32	94%	2	6%	0	0%	32	94%
Route 38	24	22	92%	2	8%	0	0%	22	92%
Route 40	28	26	93%	2	7%	0	0%	26	93%
Route 41	26	24	92%	2	8%	0	0%	24	92%
Route 42	31	30	97%	1	3%	0	0%	30	97%
Route 50	13	12	92%	1	8%	0	0%	12	92%
Route 51	15	14	93%	1	7%	0	0%	14	93%
Route 61	20	20	100%	0	0%	0	0%	20	100%
Route 74	39	15	38%	23	59%	1	3%	16	41%
Route 79	21	3	14%	17	81%	1	5%	4	19%
Route 202	20	20	100%	0	0%	0	0%	20	100%
Route 204	20	20	100%	0	0%	0	0%	20	100%
Route 206	20	20	100%	0	0%	0	0%	20	100%
Route 208	20	20	100%	0	0%	0	0%	20	100%
Jurupa Shuttle	135	130	96%	0	0%	0	0%	130	96%
<b>TOTAL</b>	<b>831</b>	<b>747</b>	<b>90%</b>	<b>77</b>	<b>9%</b>	<b>2</b>	<b>0%</b>	<b>749</b>	<b>90%</b>

CONTRACTED  
FIXED ROUTE ON TIME PERFORMANCE  
(Percent On Time)



**CONTRACTED DAR ON TIME PERFORMANCE FOR DECEMBER 2006**

<b>Dial-A-Ride</b>	<b>Total Line Checks</b>	<b>Number Late</b>	<b>Percent Late</b>	<b>Number Early</b>	<b>Percent Early</b>	<b>Number On Time</b>	<b>Percent On Time</b>
<b>Calimesa</b> - Yucaipa, Redlands	16	0	0%	1	6%	16	<b>100%</b>
<b>Hemet</b> - Homeland, Romoland, San Jacinto, Valle Vista, Winchester	3108	157	5%	190	6%	2951	<b>95%</b>
<b>Jurupa</b> - Belltown, Glen Avon, Pedley, Rubidoux, Mira Loma	607	69	11%	26	4%	538	<b>89%</b>
<b>Lake Elsinore</b> - Canyon Lake, Wildomar, Quail Valley	709	59	8%	38	5%	650	<b>92%</b>
<b>Moreno Valley</b> - Canyon Springs, MAFB	2444	196	8%	115	5%	2248	<b>92%</b>
<b>Murrieta</b> - Temecula	1536	168	11%	94	6%	1368	<b>89%</b>
<b>Corona</b> - Norco	1612	63	4%	171	11%	1549	<b>96%</b>
<b>Perris</b> - Mead Valley, Nuevo	1555	79	5%	101	6%	1476	<b>95%</b>
<b>Sun City</b> - Menifee	804	66	8%	37	5%	738	<b>92%</b>
<b>Banning</b> - Beaumont	22	0	0%	2	9%	22	<b>100%</b>
<b>Grand Terrace</b> - High Grove, Loma Linda, Colton, Redlands	225	21	9%	18	8%	204	<b>91%</b>
<b>Riverside</b> - Canyon Crest, Arnold Heights, Orangecrest, Woodcrest	3808	286	8%	267	7%	3522	<b>92%</b>
<b>TOTAL</b>	<b>16,446</b>	<b>1,164</b>	<b>7%</b>	<b>1,060</b>	<b>6%</b>	<b>15,282</b>	<b>93%</b>

**CONTRACTED DAR ON TIME PERFORMANCE**

