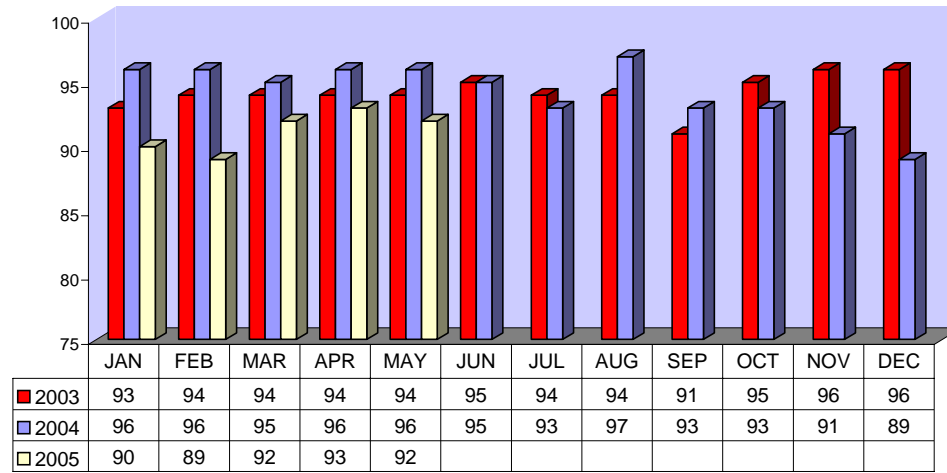


Fixed Route On Time Performance For May 2005

<i>Line</i>	<i>Total Line Checks</i>	<i>Number On Time</i>	<i>Percent On Time</i>	<i>Number Late</i>	<i>Percent Late</i>	<i>Number Ahead</i>	<i>Percent Ahead</i>	<i>Total On Time</i>	<i>Percent On Time</i>
1	694	604	87%	64	9%	26	4%	630	91%
9 (18A)	126	121	96%	4	3%	1	1%	122	97%
10	209	162	78%	44	21%	3	1%	165	79%
12	220	186	85%	33	15%	1	0%	187	85%
13	199	180	90%	18	9%	1	1%	181	91%
14	143	124	87%	16	11%	3	2%	127	89%
15	304	281	92%	20	7%	3	1%	284	93%
16	398	355	89%	29	7%	14	4%	369	93%
17	73	67	92%	6	8%	0	0%	67	92%
18	94	92	98%	1	1%	1	1%	93	99%
19	219	212	97%	7	3%	0	0%	212	97%
20	113	101	89%	11	10%	1	1%	102	90%
21	90	82	91%	6	7%	2	2%	84	93%
22	243	218	90%	13	5%	12	5%	230	95%
25	66	61	92%	2	3%	3	5%	64	97%
27	261	239	92%	18	7%	4	2%	243	93%
29	72	66	92%	6	8%	0	0%	66	92%
49	99	93	94%	6	6%	0	0%	93	94%
149	47	31	66%	4	9%	12	26%	43	91%
TOTAL	3670	3275	90%	308	8%	87	2%	3362	92%

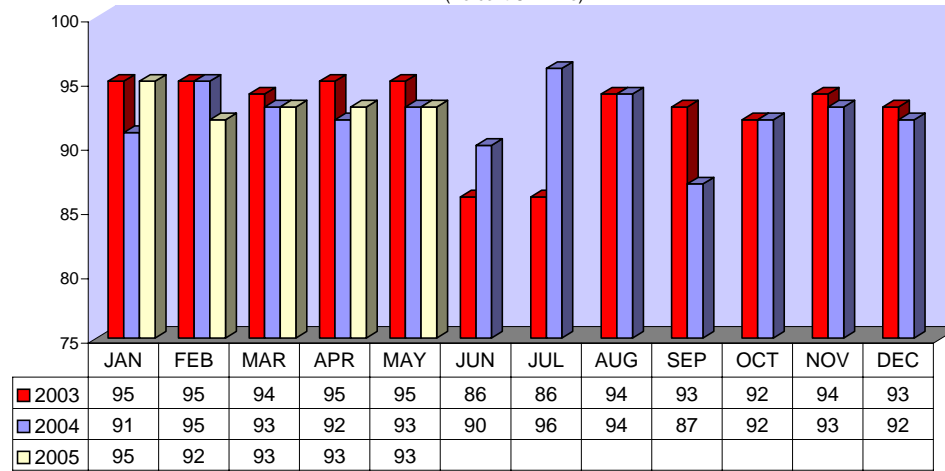
FIXED ROUTE ON TIME PERFORMANCE
(Percent On Time)



CONTRACTED FIXED ROUTE ON TIME PERFORMANCE FOR MAY 2005

Line	Total Line Checks	Number On Time	Percent On Time	Number Late	Percent Late	Number Early	Percent Early	Total On Time	Percent On Time
Route 3	53	47	89%	6	11%	0	0%	47	89%
Route 7	54	41	76%	13	24%	0	0%	41	76%
Route 8	75	69	92%	6	8%	0	0%	69	92%
Route 23	79	74	94%	5	6%	0	0%	74	94%
Route 24	63	60	95%	3	5%	0	0%	60	95%
Route 30	61	58	95%	3	5%	0	0%	58	95%
Route 31	99	90	91%	9	9%	0	0%	90	91%
Route 32	93	91	98%	2	2%	0	0%	91	98%
Route 33	59	55	93%	4	7%	0	0%	55	93%
Route 35	47	44	94%	3	6%	0	0%	44	94%
Route 36	55	53	96%	2	4%	0	0%	53	96%
Route 38	36	29	81%	7	19%	0	0%	29	81%
Route 40	57	53	93%	4	7%	0	0%	53	93%
Route 41	57	57	100%	0	0%	0	0%	57	100%
Route 42	39	39	100%	0	0%	0	0%	39	100%
Route 43	0	0	0%	0	0%	0	0%	0	0%
Route 50	27	27	100%	0	0%	0	0%	27	100%
Route 61	21	21	100%	0	0%	0	0%	21	100%
Route 74	21	18	86%	3	14%	0	0%	18	86%
Route 79	21	18	86%	3	14%	0	0%	18	86%
Route 202	21	20	95%	1	5%	0	0%	20	95%
Route 204	21	20	95%	1	5%	0	0%	20	95%
Route 206	21	20	95%	1	5%	0	0%	20	95%
Route 208	21	20	95%	1	5%	0	0%	20	95%
Jurupa Shut	190	159	84%	15	8%	16	8%	175	92%
TOTAL	1291	1183	92%	92	7%	16	1%	1199	93%

CONTRACTED
FIXED ROUTE ON TIME PERFORMANCE
(Percent On Time)



CONTRACTED DAR ON TIME PERFORMANCE FOR MAY 2005

Dial-A-Ride	Total Line Checks	Number On Time	Percent On Time	Number Late	Percent Late	Number Early	Percent Early	Total On Time	Percent On Time
Calimesa - Yucaipa, Redlands	11	7	64%	2	18%	2	18%	9	82%
Hemet - Homeland, Romoland, San Jacinto, Valle Vista, Winchester	3736	2708	72%	610	16%	418	11%	3126	84%
Jurupa - Belltown, Glen Avon, Pedley, Rubidoux, Mira Loma	655	495	76%	108	16%	52	8%	547	84%
Lake Elsinore - Canyon Lake, Wildomar, Quail Valley	1163	911	78%	138	12%	114	10%	1025	88%
Moreno Valley - Canyon Springs, MAFB	2604	1907	73%	495	19%	202	8%	2109	81%
Murrieta - Temecula	1247	973	78%	193	15%	81	6%	1054	85%
Corona - Norco	1338	920	69%	261	20%	157	12%	1077	80%
Perris - Mead Valley, Nuevo	1730	1292	75%	230	13%	208	12%	1500	87%
Sun City - Menifee	1082	913	84%	100	9%	69	6%	982	91%
Banning - Beaumont	9	8	89%	1	11%	0	0%	8	89%
Grand Terrace - High Grove, Loma Linda, Colton, Redlands	257	163	63%	67	26%	27	11%	190	74%
Riverside - Canyon Crest, Arnold Heights, Orangecrest, Woodcrest	3185	2339	73%	579	18%	267	8%	2606	82%
TOTAL	17,017	12,636	74%	2,784	16%	1,597	9%	14,233	84%

CONTRACTED DAR ON TIME PERFORMANCE

