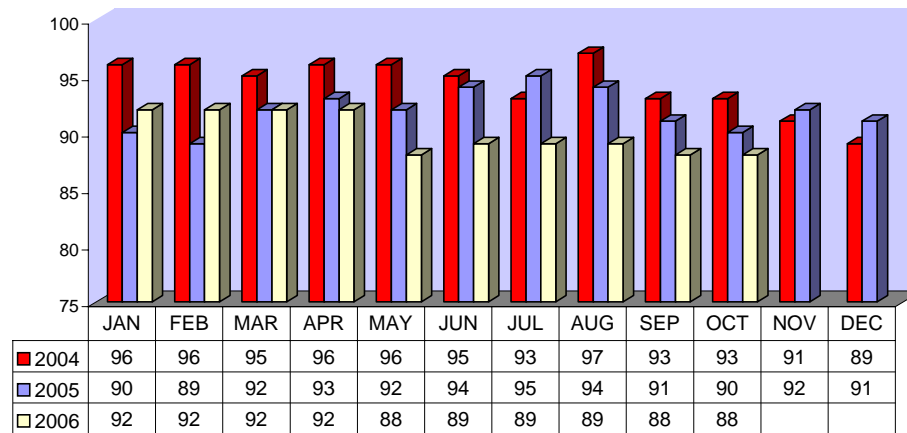


Directly Operated Fixed Route On Time Performance October 2006

<i>Line</i>	<i>Total Line Checks</i>	<i>Number On Time</i>	<i>Percent On Time</i>	<i>Number Late</i>	<i>Percent Late</i>	<i>Number Ahead</i>	<i>Percent Ahead</i>	<i>Total On Time</i>	<i>Percent On Time</i>
1	223	189	85%	30	13%	4	2%	193	87%
9 (18A)	13	11	85%	1	8%	1	8%	12	92%
10	64	53	83%	11	17%	0	0%	53	83%
12	87	71	82%	14	16%	2	2%	73	84%
13	81	67	83%	12	15%	2	2%	69	85%
14	67	61	91%	5	7%	1	1%	62	93%
15	97	89	92%	8	8%	0	0%	89	92%
16	123	108	88%	11	9%	4	3%	112	91%
17	11	8	73%	1	9%	2	18%	10	91%
18	13	12	92%	1	8%	0	0%	12	92%
19	43	40	93%	3	7%	0	0%	40	93%
20	38	33	87%	3	8%	2	5%	35	92%
21	25	21	84%	2	8%	1	4%	22	88%
22	59	45	76%	12	20%	2	3%	47	80%
25	33	32	97%	1	3%	0	0%	32	97%
27	61	47	77%	13	21%	1	2%	48	79%
29	34	33	97%	1	3%	0	0%	33	97%
49 (4)	38	36	95%	2	5%	0	0%	36	95%
149 (11)	30	17	57%	6	20%	7	23%	24	80%
TOTAL	1140	973	85%	137	12%	29	3%	1002	88%

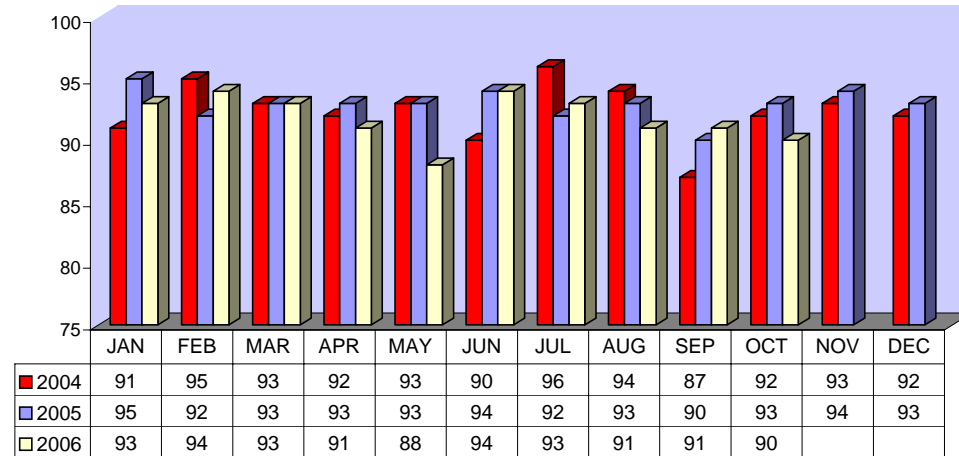
**DIRECTLY OPERATED FIXED ROUTE ON TIME PERFORMANCE
(Percent On Time)**



CONTRACTED FIXED ROUTE ON TIME PERFORMANCE FOR OCTOBER 2006

Line	Total Line Checks	Number On Time	Percent On Time	Number Late	Percent Late	Number Early	Percent Early	Total On Time	Percent On Time
Route 3	45	39	87%	5	11%	1	2%	40	89%
Route 7	42	37	88%	5	12%	0	0%	37	88%
Route 8	39	27	69%	11	28%	1	3%	28	72%
Route 23	40	36	90%	4	10%	0	0%	36	90%
Route 24	39	35	90%	4	10%	0	0%	35	90%
Route 30	58	49	84%	9	16%	0	0%	49	84%
Route 31	50	44	88%	4	8%	2	4%	46	92%
Route 32	44	37	84%	3	7%	4	9%	41	93%
Route 33	36	33	92%	1	3%	2	6%	35	97%
Route 35	28	27	96%	1	4%	0	0%	27	96%
Route 36	19	17	89%	1	5%	1	5%	18	95%
Route 38	34	29	85%	5	15%	0	0%	29	85%
Route 40	36	31	86%	5	14%	0	0%	31	86%
Route 41	20	19	95%	1	5%	0	0%	19	95%
Route 42	24	23	96%	1	4%	0	0%	23	96%
Route 50	15	15	100%	0	0%	0	0%	15	100%
Route 61	20	19	95%	1	5%	0	0%	19	95%
Route 74	52	29	56%	23	44%	0	0%	29	56%
Route 79	22	21	95%	1	5%	0	0%	21	95%
Route 202	22	22	100%	0	0%	0	0%	22	100%
Route 204	35	33	94%	0	0%	0	0%	33	94%
Route 206	22	22	100%	0	0%	2	9%	24	109%
Route 208	27	23	85%	4	15%	0	0%	23	85%
Jurupa Shuttle	201	190	95%	11	5%	0	0%	190	95%
TOTAL	970	857	88%	100	10%	13	1%	870	90%

CONTRACTED
FIXED ROUTE ON TIME PERFORMANCE
(Percent On Time)

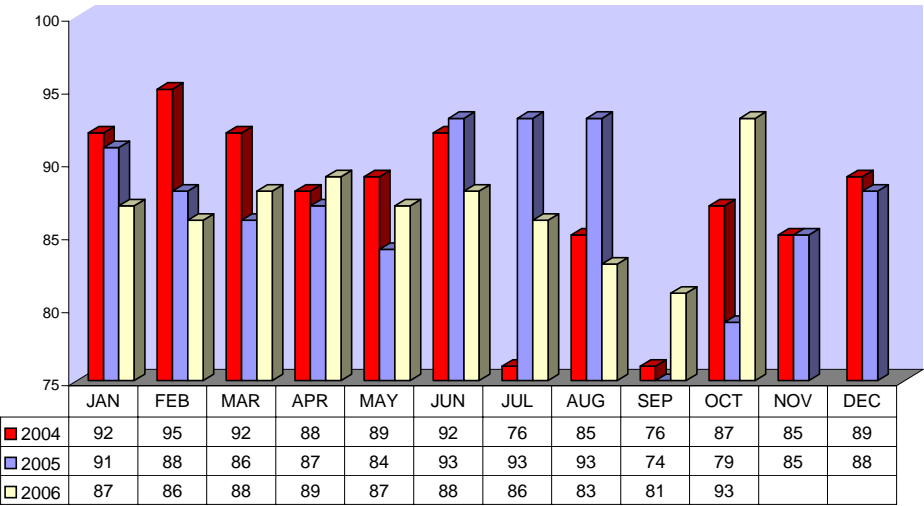


CONTRACTED DAR ON TIME PERFORMANCE FOR OCTOBER 2006

Dial-A-Ride	Total Line Checks	Number Late	Percent Late	Number Early	Percent Early	Number On Time	Percent On Time
Calimesa - Yucaipa, Redlands	9	0	0%	1	11%	9	100%
Hemet - Homeland, Romoland, San Jacinto, Valle Vista, Winchester	3370	178	5%	20	1%	3192	95%
Jurupa - Belltown, Glen Avon, Pedley, Rubidoux, Mira Loma	552	51	9%	6	1%	501	91%
Lake Elsinore - Canyon Lake, Wildomar, Quail Valley	890	66	7%	2	0%	824	93%
Moreno Valley - Canyon Springs, MAFB	2571	209	8%	16	1%	2362	92%
Murrieta - Temecula	1691	131	8%	11	1%	1560	92%
Corona - Norco	1783	121	7%	14	1%	1662	93%
Perris - Mead Valley, Nuevo	1738	114	7%	18	1%	1624	93%
Sun City - Menifee	953	61	6%	1	0%	892	94%
Banning - Beaumont	21	1	5%	0	0%	20	95%
Grand Terrace - High Grove, Loma Linda, Colton, Redlands	235	25	11%	3	1%	210	89%
Riverside - Canyon Crest, Arnold Heights, Orangecrest, Woodcrest	4065	352	9%	42	1%	3713	91%
TOTAL	17,878	1,309	7%	134	1%	16,569	93%

August and September numbers on Dial-A-Ride are incorrect and will be changed next month.

CONTRACTED DAR ON TIME PERFORMANCE



August and September numbers on Dial-A-Ride are incorrect and will be changed next month.