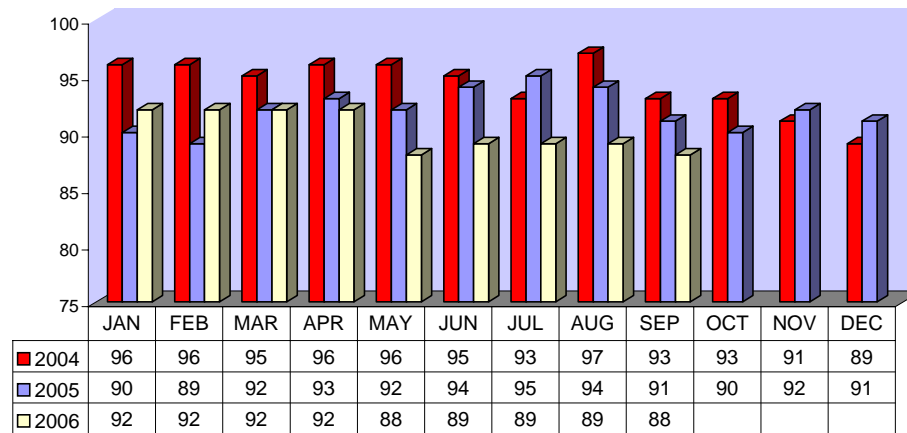


Directly Operated Fixed Route On Time Performance September 2006

<i>Line</i>	<i>Total Line Checks</i>	<i>Number On Time</i>	<i>Percent On Time</i>	<i>Number Late</i>	<i>Percent Late</i>	<i>Number Ahead</i>	<i>Percent Ahead</i>	<i>Total On Time</i>	<i>Percent On Time</i>
1	349	298	85%	39	11%	12	3%	310	89%
9 (18A)	50	47	94%	3	6%	0	0%	47	94%
10	105	85	81%	17	16%	3	3%	88	84%
12	133	95	71%	30	23%	8	6%	103	77%
13	132	118	89%	10	8%	4	3%	122	92%
14	78	68	87%	8	10%	2	3%	70	90%
15	156	128	82%	20	13%	8	5%	136	87%
16	204	174	85%	21	10%	9	4%	183	90%
17	27	22	81%	1	4%	4	15%	26	96%
18	32	30	94%	1	3%	1	3%	31	97%
19	82	71	87%	11	13%	0	0%	71	87%
20	65	57	88%	4	6%	4	6%	61	94%
21	41	32	78%	9	22%	0	0%	32	78%
22	100	75	75%	22	22%	3	3%	78	78%
25	49	46	94%	1	2%	2	4%	48	98%
27	85	74	87%	9	11%	2	2%	76	89%
29	35	32	91%	1	3%	2	6%	34	97%
49 (4)	57	47	82%	10	18%	0	0%	47	82%
149 (11)	24	16	67%	6	25%	2	8%	18	75%
TOTAL	1804	1515	84%	223	12%	66	4%	1581	88%

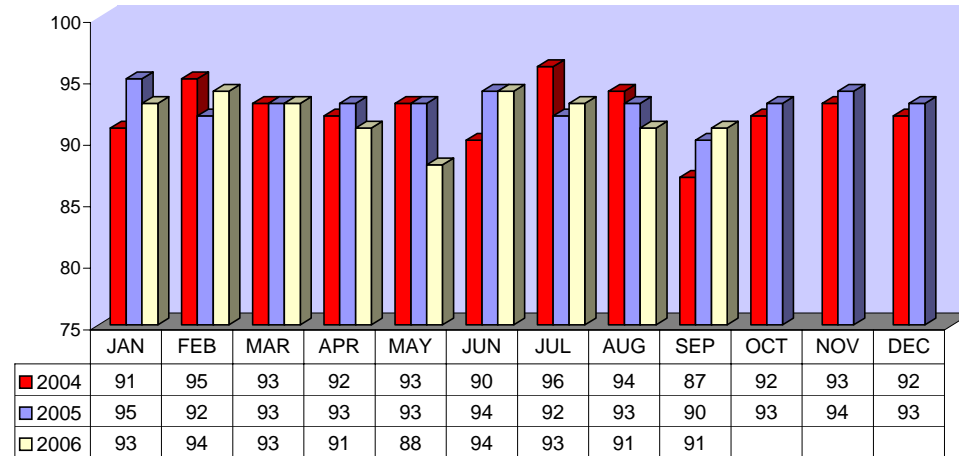
**DIRECTLY OPERATED FIXED ROUTE ON TIME PERFORMANCE
(Percent On Time)**



CONTRACTED FIXED ROUTE ON TIME PERFORMANCE FOR SEPTEMBER 2006

Line	Total Line Checks	Number On Time	Percent On Time	Number Late	Percent Late	Number Early	Percent Early	Total On Time	Percent On Time
Route 3	16	14	88%	2	13%	0	0%	14	88%
Route 7	22	19	86%	3	14%	0	0%	19	86%
Route 8	20	18	90%	2	10%	0	0%	18	90%
Route 23	22	21	95%	0	0%	1	5%	22	100%
Route 24	20	17	85%	3	15%	0	0%	17	85%
Route 30	39	32	82%	6	15%	1	3%	33	85%
Route 31	21	19	90%	2	10%	0	0%	19	90%
Route 32	24	21	88%	3	13%	0	0%	21	88%
Route 33	18	18	100%	0	0%	0	0%	18	100%
Route 35	22	21	95%	0	0%	1	5%	22	100%
Route 36	19	16	84%	3	16%	0	0%	16	84%
Route 38	18	15	83%	3	17%	0	0%	15	83%
Route 40	15	14	93%	1	7%	0	0%	14	93%
Route 41	16	14	88%	2	13%	0	0%	14	88%
Route 42	14	14	100%	0	0%	0	0%	14	100%
Route 50	10	10	100%	0	0%	0	0%	10	100%
Route 61	20	20	100%	0	0%	0	0%	20	100%
Route 74	25	22	88%	3	12%	0	0%	22	88%
Route 79	22	19	86%	3	14%	0	0%	19	86%
Route 202	20	20	100%	0	0%	0	0%	20	100%
Route 204	22	20	91%	2	9%	0	0%	20	91%
Route 206	47	46	98%	0	0%	1	2%	47	100%
Route 208	30	25	83%	5	17%	0	0%	25	83%
Jurupa Shuttle	176	160	91%	16	9%	59	34%	160	91%
TOTAL	678	615	91%	59	9%	63	9%	619	91%

CONTRACTED
FIXED ROUTE ON TIME PERFORMANCE
(Percent On Time)



CONTRACTED DAR ON TIME PERFORMANCE FOR SEPTEMBER 2006

Dial-A-Ride	Total Line Checks	Number Late	Percent Late	Number Early	Percent Early	Number On Time	Percent On Time
Calimesa - Yucaipa, Redlands	16	5	31%	6	38%	11	69%
Hemet - Homeland, Romoland, San Jacinto, Valle Vista, Winchester	3416	436	13%	1856	54%	2980	87%
Jurupa - Belltown, Glen Avon, Pedley, Rubidoux, Mira Loma	529	120	23%	222	42%	409	77%
Lake Elsinore - Canyon Lake, Wildomar, Quail Valley	933	190	20%	399	43%	743	80%
Moreno Valley - Canyon Springs, MAFB	2568	538	21%	995	39%	2030	79%
Murrieta - Temecula	1691	326	19%	758	45%	1365	81%
Corona - Norco	1569	281	18%	783	50%	1288	82%
Perris - Mead Valley, Nuevo	1734	300	17%	793	46%	1434	83%
Sun City - Menifee	980	174	18%	405	41%	806	82%
Banning - Beaumont	17	3	18%	10	59%	14	82%
Grand Terrace - High Grove, Loma Linda, Colton, Redlands	268	67	25%	106	40%	201	75%
Riverside - Canyon Crest, Arnold Heights, Orangecrest, Woodcrest	3921	894	23%	1581	40%	3027	77%
TOTAL	17,642	3,334	19%	7,914	45%	14,308	81%

CONTRACTED DAR ON TIME PERFORMANCE

