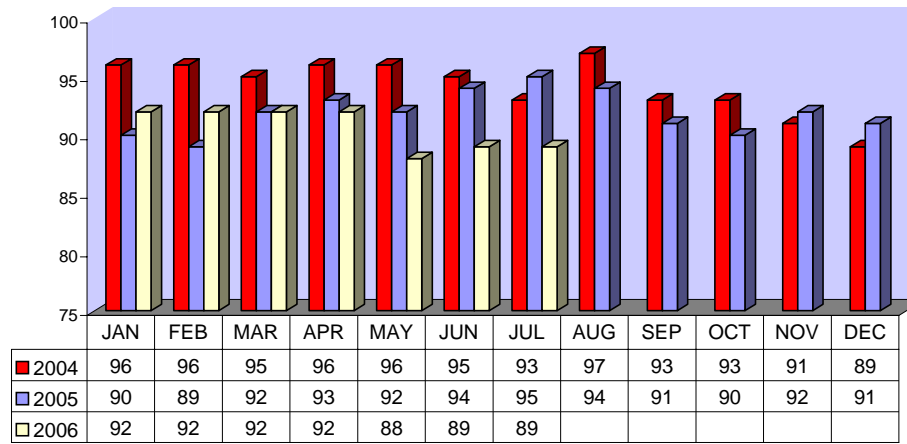


**Directly Operated Fixed Route On Time Performance July 2006**

<i>Line</i>	<i>Total Line Checks</i>	<i>Number On Time</i>	<i>Percent On Time</i>	<i>Number Late</i>	<i>Percent Late</i>	<i>Number Ahead</i>	<i>Percent Ahead</i>	<i>Total On Time</i>	<i>Percent On Time</i>
1	601	505	84%	67	11%	29	5%	534	89%
9 (18A)	58	50	86%	6	10%	2	3%	52	90%
10	206	174	84%	29	14%	3	1%	177	86%
12	199	154	77%	35	18%	10	5%	164	82%
13	172	158	92%	10	6%	4	2%	162	94%
14	135	112	83%	18	13%	5	4%	117	87%
15	242	204	84%	37	15%	1	0%	205	85%
16	337	277	82%	20	6%	40	12%	317	94%
17	42	38	90%	2	5%	2	5%	40	95%
18	45	44	98%	1	2%	0	0%	44	98%
19	90	77	86%	9	10%	4	4%	81	90%
20	98	93	95%	4	4%	1	1%	94	96%
21	78	65	83%	7	9%	6	8%	71	91%
22	131	110	84%	18	14%	2	2%	112	85%
25	91	77	85%	10	11%	5	5%	82	90%
27	127	114	90%	8	6%	5	4%	119	94%
29	66	63	95%	2	3%	1	2%	64	97%
49 (4)	118	92	78%	25	21%	1	1%	93	79%
149 (11)	53	41	77%	2	4%	10	19%	51	96%
<b>TOTAL</b>	<b>2889</b>	<b>2448</b>	<b>85%</b>	<b>310</b>	<b>11%</b>	<b>131</b>	<b>5%</b>	<b>2579</b>	<b>89%</b>

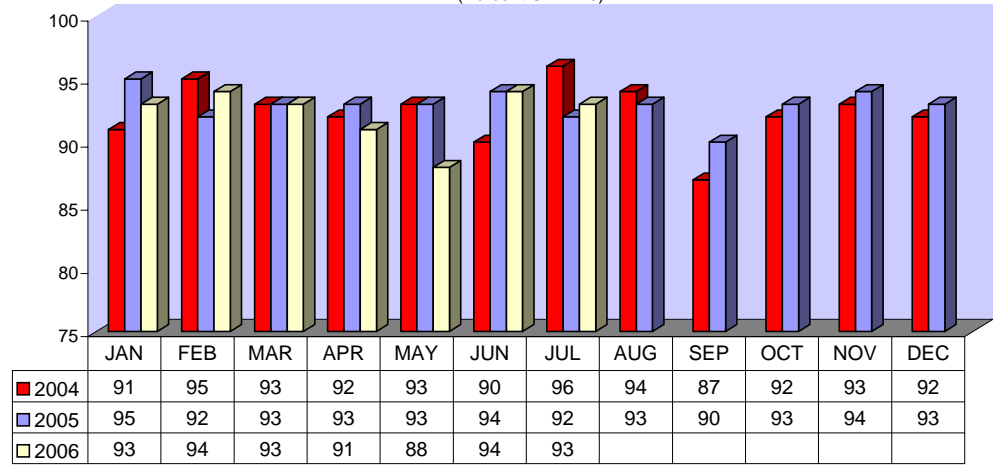
**DIRECTLY OPERATED FIXED ROUTE ON TIME PERFORMANCE  
(Percent On Time)**



**CONTRACTED FIXED ROUTE ON TIME PERFORMANCE FOR JULY 2006**

Line	Total Line Checks	Number On Time	Percent On Time	Number Late	Percent Late	Number Early	Percent Early	Total On Time	Percent On Time
Route 3	25	24	96%	1	4%	0	0%	24	96%
Route 7	45	41	91%	4	9%	0	0%	41	91%
Route 8	35	32	91%	3	9%	0	0%	32	91%
Route 23	30	28	93%	2	7%	0	0%	28	93%
Route 24	32	29	91%	2	6%	1	3%	30	94%
Route 30	54	52	96%	2	4%	0	0%	52	96%
Route 31	53	48	91%	5	9%	0	0%	48	91%
Route 32	47	43	91%	4	9%	0	0%	43	91%
Route 33	29	29	100%	0	0%	0	0%	29	100%
Route 35	37	35	95%	2	5%	0	0%	35	95%
Route 36	20	19	95%	1	5%	0	0%	19	95%
Route 38	24	22	92%	2	8%	0	0%	22	92%
Route 40	20	20	100%	0	0%	0	0%	20	100%
Route 41	21	20	95%	1	5%	0	0%	20	95%
Route 42	23	23	100%	0	0%	0	0%	23	100%
Route 50	20	17	85%	3	15%	0	0%	17	85%
Route 61	23	23	100%	0	0%	0	0%	23	100%
Route 74	36	34	94%	2	6%	0	0%	34	94%
Route 79	27	25	93%	2	7%	0	0%	25	93%
Route 202	21	20	95%	1	5%	0	0%	20	95%
Route 204	32	31	97%	1	3%	0	0%	31	97%
Route 206	21	20	95%	1	5%	0	0%	20	95%
Route 208	51	48	94%	3	6%	0	0%	48	94%
Jurupa Shuttle	157	141	90%	16	10%	37	24%	141	90%
<b>TOTAL</b>	<b>883</b>	<b>824</b>	<b>93%</b>	<b>58</b>	<b>7%</b>	<b>38</b>	<b>4%</b>	<b>825</b>	<b>93%</b>

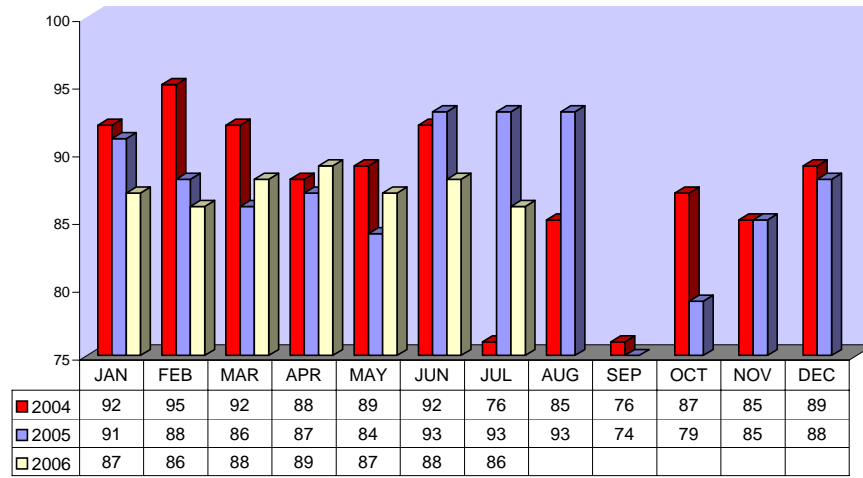
CONTRACTED  
FIXED ROUTE ON TIME PERFORMANCE  
(Percent On Time)



**CONTRACTED DAR ON TIME PERFORMANCE FOR JULY 2006**

<b>Dial-A-Ride</b>	<b>Total Line Checks</b>	<b>Number Late</b>	<b>Percent Late</b>	<b>Number Early</b>	<b>Percent Early</b>	<b>Number On Time</b>	<b>Percent On Time</b>
<b>Calimesa</b> - Yucaipa, Redlands	14	6	43%	3	21%	8	<b>57%</b>
<b>Hemet</b> - Homeland, Romoland, San Jacinto, Valle Vista, Winchester	3340	287	9%	1929	58%	3053	<b>91%</b>
<b>Jurupa</b> - Belltown, Glen Avon, Pedley, Rubidoux, Mira Loma	504	94	19%	220	44%	410	<b>81%</b>
<b>Lake Elsinore</b> - Canyon Lake, Wildomar, Quail Valley	916	128	14%	455	50%	788	<b>86%</b>
<b>Moreno Valley</b> - Canyon Springs, MAFB	2514	326	13%	1207	48%	2188	<b>87%</b>
<b>Murrieta</b> - Temecula	1631	236	14%	769	47%	1395	<b>86%</b>
<b>Corona</b> - Norco	1147	154	13%	648	56%	993	<b>87%</b>
<b>Perris</b> - Mead Valley, Nuevo	1705	223	13%	836	49%	1482	<b>87%</b>
<b>Sun City</b> - Menifee	945	112	12%	444	47%	833	<b>88%</b>
<b>Banning</b> - Beaumont	16	3	19%	10	63%	13	<b>81%</b>
<b>Grand Terrace</b> - High Grove, Loma Linda, Colton, Redlands	293	57	19%	136	46%	236	<b>81%</b>
<b>Riverside</b> - Canyon Crest, Arnold Heights, Orangecrest, Woodcrest	3488	651	19%	1649	47%	2837	<b>81%</b>
<b>TOTAL</b>	<b>16,513</b>	<b>2,277</b>	<b>14%</b>	<b>8,306</b>	<b>50%</b>	<b>14,236</b>	<b>86%</b>

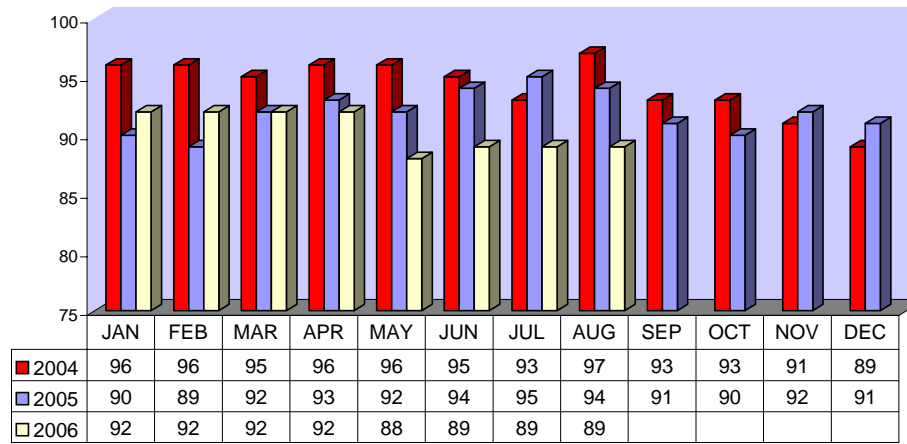
CONTRACTED DAR ON TIME PERFORMANCE



**Directly Operated Fixed Route On Time Performance August 2006**

Line	Total Line Checks	Number On Time	Percent On Time	Number Late	Percent Late	Number Ahead	Percent Ahead	Total On Time	Percent On Time
1	639	540	85%	79	12%	20	3%	560	88%
9 (18A)	66	60	91%	4	6%	2	3%	62	94%
10	168	151	90%	17	10%	0	0%	151	90%
12	201	144	72%	53	26%	4	2%	148	74%
13	182	171	94%	8	4%	3	2%	174	96%
14	169	141	83%	25	15%	3	2%	144	85%
15	258	234	91%	23	9%	1	0%	235	91%
16	394	334	85%	33	8%	27	7%	361	92%
17	44	39	89%	1	2%	4	9%	43	98%
18	57	51	89%	6	11%	0	0%	51	89%
19	104	86	83%	10	10%	8	8%	94	90%
20	124	105	85%	18	15%	1	1%	106	85%
21	58	49	84%	4	7%	5	9%	54	93%
22	159	141	89%	18	11%	0	0%	141	89%
25	80	65	81%	13	16%	2	3%	67	84%
27	146	137	94%	6	4%	3	2%	140	96%
29	83	82	99%	1	1%	0	0%	82	99%
49 (4)	95	77	81%	16	17%	2	2%	79	83%
149 (11)	54	40	74%	8	15%	6	11%	46	85%
<b>TOTAL</b>	<b>3081</b>	<b>2647</b>	<b>86%</b>	<b>343</b>	<b>11%</b>	<b>91</b>	<b>3%</b>	<b>2738</b>	<b>89%</b>

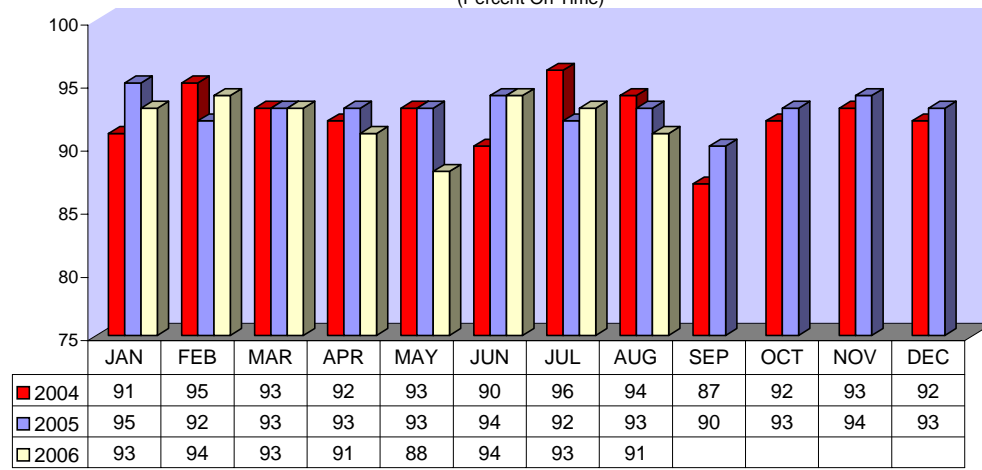
**DIRECTLY OPERATED FIXED ROUTE ON TIME PERFORMANCE  
(Percent On Time)**



**CONTRACTED FIXED ROUTE ON TIME PERFORMANCE FOR AUGUST 2006**

Line	Total Line Checks	Number On Time	Percent On Time	Number Late	Percent Late	Number Early	Percent Early	Total On Time	Percent On Time
Route 3	45	39	87%	0	0%	6	13%	45	100%
Route 7	32	27	84%	5	16%	0	0%	27	84%
Route 8	40	38	95%	2	5%	0	0%	38	95%
Route 23	49	47	96%	1	2%	1	2%	48	98%
Route 24	29	27	93%	1	3%	1	3%	28	97%
Route 30	49	44	90%	5	10%	0	0%	44	90%
Route 31	50	44	88%	6	12%	0	0%	44	88%
Route 32	41	30	73%	9	22%	2	5%	32	78%
Route 33	55	51	93%	4	7%	0	0%	51	93%
Route 35	34	32	94%	2	6%	0	0%	32	94%
Route 36	20	17	85%	3	15%	0	0%	17	85%
Route 38	21	17	81%	2	10%	2	10%	19	90%
Route 40	47	45	96%	1	2%	1	2%	46	98%
Route 41	23	22	96%	1	4%	0	0%	22	96%
Route 42	16	15	94%	1	6%	0	0%	15	94%
Route 50	9	7	78%	2	22%	0	0%	7	78%
Route 61	24	23	96%	1	4%	0	0%	23	96%
Route 74	34	28	82%	6	18%	0	0%	28	82%
Route 79	28	24	86%	4	14%	0	0%	24	86%
Route 202	23	23	100%	0	0%	0	0%	23	100%
Route 204	32	27	84%	5	16%	0	0%	27	84%
Route 206	23	23	100%	0	0%	0	0%	23	100%
Route 208	79	67	85%	10	13%	2	3%	69	87%
Jurupa Shuttle	181	167	92%	14	8%	51	28%	167	92%
<b>TOTAL</b>	<b>984</b>	<b>884</b>	<b>90%</b>	<b>85</b>	<b>9%</b>	<b>66</b>	<b>7%</b>	<b>899</b>	<b>91%</b>

CONTRACTED  
FIXED ROUTE ON TIME PERFORMANCE  
(Percent On Time)



**CONTRACTED DAR ON TIME PERFORMANCE FOR AUGUST 2006**

<b>Dial-A-Ride</b>	<b>Total Line Checks</b>	<b>Number Late</b>	<b>Percent Late</b>	<b>Number Early</b>	<b>Percent Early</b>	<b>Number On Time</b>	<b>Percent On Time</b>
<b>Calimesa</b> - Yucaipa, Redlands	7	1	14%	4	57%	6	<b>86%</b>
<b>Hemet</b> - Homeland, Romoland, San Jacinto, Valle Vista, Winchester	3733	442	12%	1907	51%	3291	<b>88%</b>
<b>Jurupa</b> - Belltown, Glen Avon, Pedley, Rubidoux, Mira Loma	501	103	21%	187	37%	398	<b>79%</b>
<b>Lake Elsinore</b> - Canyon Lake, Wildomar, Quail Valley	1025	148	14%	456	44%	877	<b>86%</b>
<b>Moreno Valley</b> - Canyon Springs, MAFB	2626	482	18%	1085	41%	2144	<b>82%</b>
<b>Murrieta</b> - Temecula	1842	402	22%	758	41%	1440	<b>78%</b>
<b>Corona</b> - Norco	1411	226	16%	722	51%	1185	<b>84%</b>
<b>Perris</b> - Mead Valley, Nuevo	1841	291	16%	853	46%	1550	<b>84%</b>
<b>Sun City</b> - Menifee	1022	154	15%	429	42%	868	<b>85%</b>
<b>Banning</b> - Beaumont	14	2	14%	8	57%	12	<b>86%</b>
<b>Grand Terrace</b> - High Grove, Loma Linda, Colton, Redlands	322	80	25%	125	39%	242	<b>75%</b>
<b>Riverside</b> - Canyon Crest, Arnold Heights, Orangecrest, Woodcrest	4064	795	20%	1724	42%	3269	<b>80%</b>
<b>TOTAL</b>	<b>18,408</b>	<b>3,126</b>	<b>17%</b>	<b>8,258</b>	<b>45%</b>	<b>15,282</b>	<b>83%</b>

CONTRACTED DAR ON TIME PERFORMANCE

