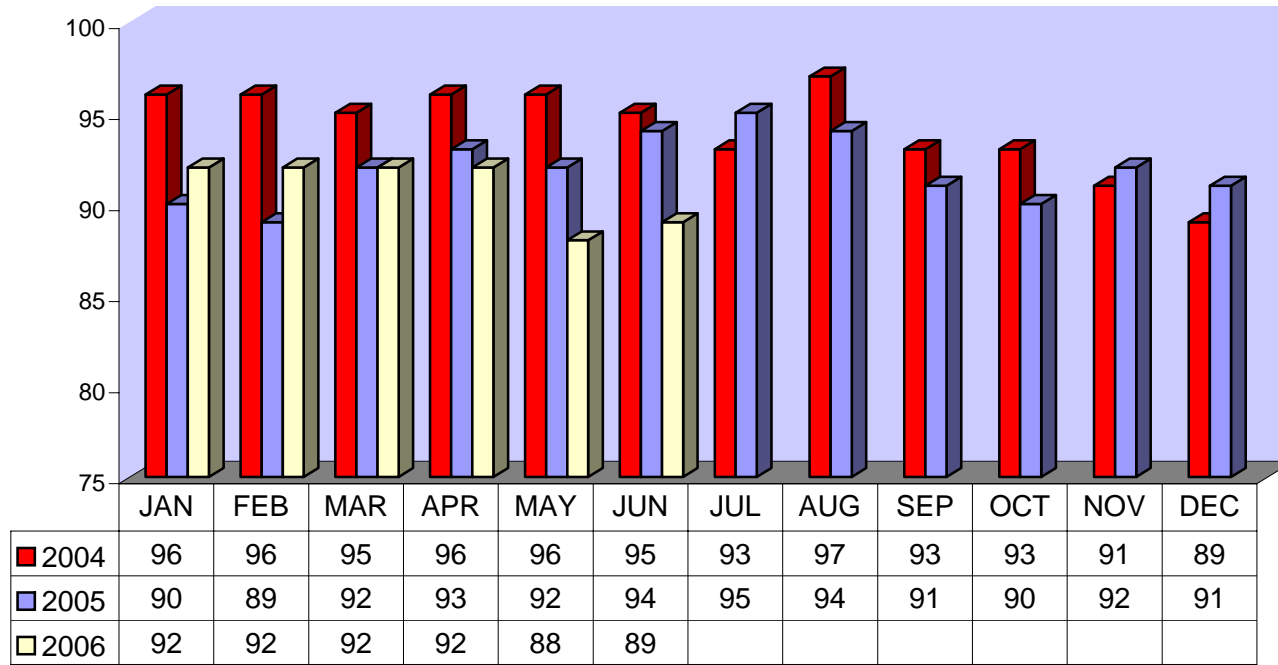


## Directly Operated Fixed Route On Time Performance June 2006

<i>Line</i>	<i>Total Line Checks</i>	<i>Number On Time</i>	<i>Percent On Time</i>	<i>Number Late</i>	<i>Percent Late</i>	<i>Number Ahead</i>	<i>Percent Ahead</i>	<i>Total On Time</i>	<i>Percent On Time</i>
1	275	242	88%	28	10%	6	2%	248	90%
9 (18A)	50	46	91%	4	7%	1	2%	47	93%
10	75	63	84%	11	15%	2	2%	65	86%
12	74	57	77%	16	22%	1	1%	58	78%
13	72	64	89%	7	10%	1	1%	65	90%
14	50	43	86%	6	12%	1	2%	44	88%
15	93	84	90%	8	9%	1	1%	85	91%
16	192	171	89%	13	7%	8	4%	179	93%
17	46	46	100%	0	0%	0	0%	46	100%
18	49	44	89%	4	8%	1	3%	45	92%
19	72	64	89%	5	7%	3	4%	67	93%
20	77	65	85%	12	15%	1	1%	66	86%
21	51	40	78%	10	20%	1	1%	40	79%
22	96	80	83%	15	16%	2	2%	82	85%
25	49	38	78%	8	16%	2	5%	41	83%
27	118	99	84%	19	16%	1	1%	100	85%
29	48	45	93%	3	7%	0	0%	45	93%
49 (4)	53	47	88%	6	12%	0	0%	47	88%
149 (11)	33	28	85%	4	13%	1	2%	29	87%
<b>TOTAL</b>	<b>1573</b>	<b>1364</b>	<b>87%</b>	<b>180</b>	<b>11%</b>	<b>31</b>	<b>2%</b>	<b>1395</b>	<b>89%</b>

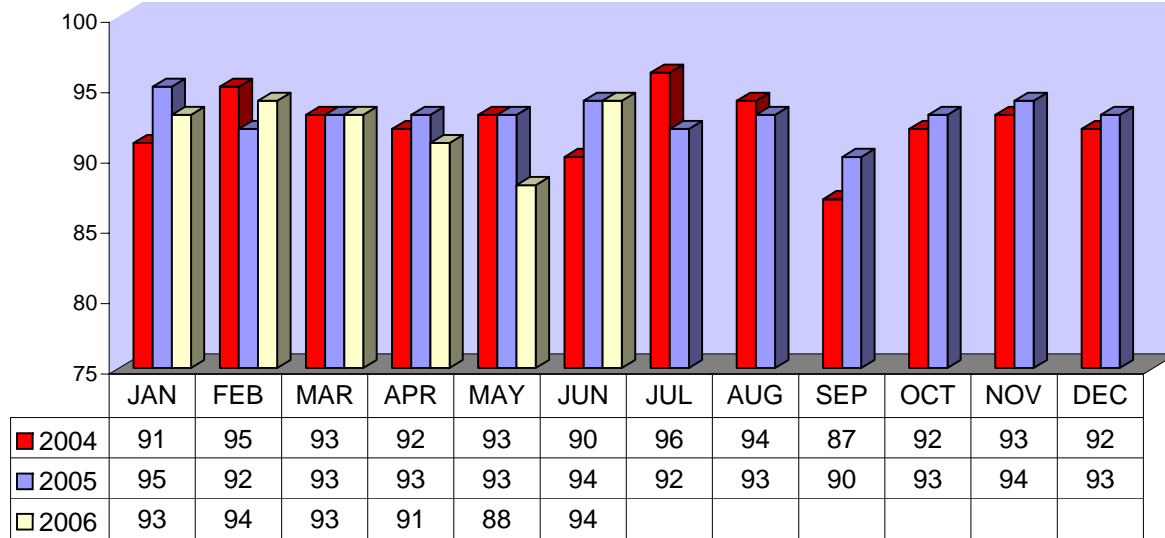
**DIRECTLY OPERATED FIXED ROUTE ON TIME PERFORMANCE  
(Percent On Time)**



### CONTRACTED FIXED ROUTE ON TIME PERFORMANCE FOR JUNE 2006

Line	Total Line Checks	Number On Time	Percent On Time	Number Late	Percent Late	Number Early	Percent Early	Total On Time	Percent On Time
Route 3	42	37	88%	5	12%	0	0%	37	88%
Route 7	83	74	89%	9	11%	3	4%	77	93%
Route 8	83	72	87%	11	13%	1	1%	73	88%
Route 23	66	58	88%	8	12%	2	3%	60	91%
Route 24	63	58	92%	5	8%	2	3%	60	95%
Route 30	63	57	90%	6	10%	2	3%	59	94%
Route 31	65	55	85%	10	15%	0	0%	55	85%
Route 32	73	64	88%	9	12%	1	1%	65	89%
Route 33	54	50	93%	4	7%	1	2%	51	94%
Route 35	40	39	98%	1	3%	0	0%	39	98%
Route 36	48	48	100%	0	0%	0	0%	48	100%
Route 38	34	31	91%	3	9%	0	0%	31	91%
Route 40	43	42	98%	1	2%	0	0%	42	98%
Route 41	37	37	100%	0	0%	0	0%	37	100%
Route 42	51	51	100%	0	0%	0	0%	51	100%
Route 50	45	45	100%	0	0%	0	0%	45	100%
Route 61	23	22	96%	1	4%	0	0%	22	96%
Route 74	22	21	95%	1	5%	0	0%	21	95%
Route 79	22	22	100%	0	0%	0	0%	22	100%
Route 202	22	19	86%	3	14%	0	0%	19	86%
Route 204	22	21	95%	1	5%	0	0%	21	95%
Route 206	22	21	95%	1	5%	0	0%	21	95%
Route 208	22	22	100%	0	0%	0	0%	22	100%
Jurupa Shut	171	159	93%	12	7%	63	37%	159	93%
<b>TOTAL</b>	<b>1216</b>	<b>1125</b>	<b>93%</b>	<b>91</b>	<b>7%</b>	<b>75</b>	<b>6%</b>	<b>1137</b>	<b>94%</b>

CONTRACTED  
FIXED ROUTE ON TIME PERFORMANCE  
(Percent On Time)



### CONTRACTED DAR ON TIME PERFORMANCE FOR JUNE 2006

Dial-A-Ride	Total Line Checks	Number Late	Percent Late	Number Early	Percent Early	Number On Time	Percent On Time
<b>Calimesa</b> - Yucaipa, Redlands	14	0	0%	0	0%	14	100%
<b>Hemet</b> - Homeland, Romoland, San Jacinto, Valle Vista, Winchester	3405	271	8%	204	6%	3134	92%
<b>Jurupa</b> - Belltown, Glen Avon, Pedley, Rubidoux, Mira Loma	464	55	12%	37	8%	409	88%
<b>Lake Elsinore</b> - Canyon Lake, Wildomar, Quail Valley	997	118	12%	73	7%	879	88%
<b>Moreno Valley</b> - Canyon Springs, MAFB	2532	326	13%	238	9%	2206	87%
<b>Murrieta</b> - Temecula	1682	239	14%	146	9%	1443	86%
<b>Corona</b> - Norco	1114	141	13%	76	7%	973	87%
<b>Perris</b> - Mead Valley, Nuevo	1820	213	12%	210	12%	1607	88%
<b>Sun City</b> - Menifee	1003	110	11%	69	7%	893	89%
<b>Banning</b> - Beaumont	10	3	30%	2	20%	7	70%
<b>Grand Terrace</b> - High Grove, Loma Linda, Colton, Redlands	341	71	21%	32	9%	270	79%
<b>Riverside</b> - Canyon Crest, Arnold Heights, Orangecrest, Woodcrest	3357	435	13%	317	9%	2922	87%
<b>TOTAL</b>	16,739	1,982	12%	1,404	8%	14,757	88%

### CONTRACTED DAR ON TIME PERFORMANCE

