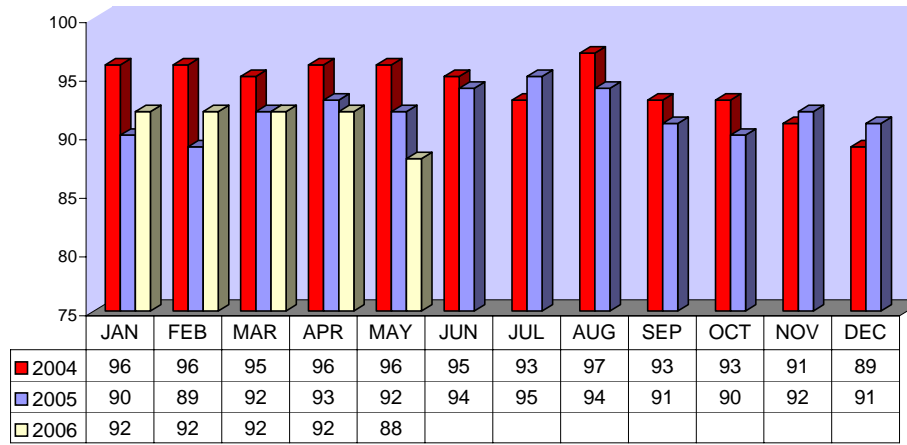


Directly Operated Fixed Route On Time Performance May 2006

<i>Line</i>	<i>Total Line Checks</i>	<i>Number On Time</i>	<i>Percent On Time</i>	<i>Number Late</i>	<i>Percent Late</i>	<i>Number Ahead</i>	<i>Percent Ahead</i>	<i>Total On Time</i>	<i>Percent On Time</i>
1	493	419	85%	57	12%	17	3%	436	88%
9 (18A)	45	38	84%	6	13%	1	2%	39	87%
10	165	144	87%	19	12%	2	1%	146	88%
12	156	129	83%	26	17%	1	1%	130	83%
13	148	134	91%	11	7%	3	2%	137	93%
14	113	98	87%	13	12%	2	2%	100	88%
15	214	188	88%	25	12%	1	0%	189	88%
16	299	258	86%	32	11%	9	3%	267	89%
17	42	38	90%	2	5%	2	5%	40	95%
18	35	35	100%	0	0%	0	0%	35	100%
19	86	76	88%	7	8%	3	3%	79	92%
20	66	58	88%	8	12%	0	0%	58	88%
21	62	55	89%	6	10%	1	2%	56	90%
22	141	112	79%	25	18%	4	3%	116	82%
25	57	42	74%	13	23%	2	4%	44	77%
27	139	122	88%	14	10%	3	2%	125	90%
29	66	55	83%	10	15%	1	2%	56	85%
49 (4)	97	84	87%	12	12%	1	1%	85	88%
149 (11)	40	32	80%	2	5%	6	15%	38	95%
TOTAL	2464	2117	86%	288	12%	59	2%	2176	88%

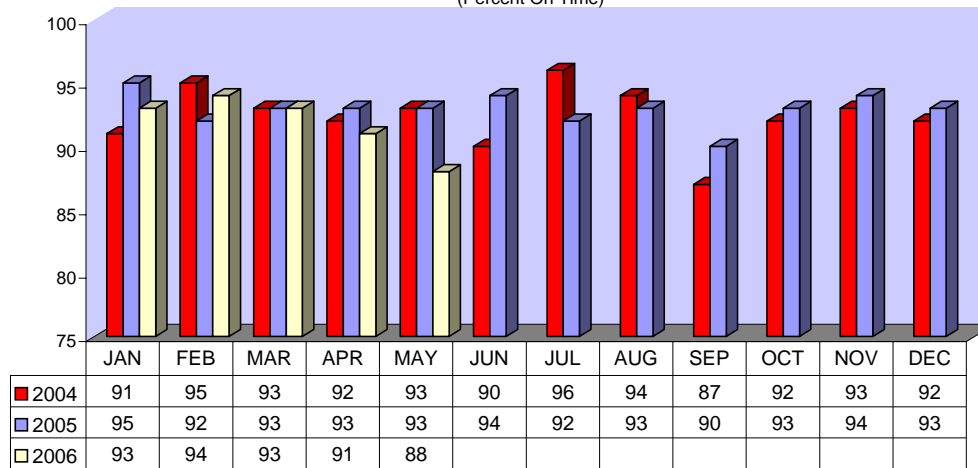
**DIRECTLY OPERATED FIXED ROUTE ON TIME PERFORMANCE
(Percent On Time)**



CONTRACTED FIXED ROUTE ON TIME PERFORMANCE FOR MAY 2006

Line	Total Line Checks	Number On Time	Percent On Time	Number Late	Percent Late	Number Early	Percent Early	Total On Time	Percent On Time
Route 3	82	73	89%	9	11%	0	0%	73	89%
Route 7	74	65	88%	8	11%	1	1%	66	89%
Route 8	69	63	91%	4	6%	2	3%	65	94%
Route 23	78	67	86%	10	13%	1	1%	68	87%
Route 24	80	74	93%	4	5%	2	3%	76	95%
Route 30	70	60	86%	10	14%	0	0%	60	86%
Route 31	71	66	93%	5	7%	0	0%	66	93%
Route 32	65	55	85%	10	15%	0	0%	55	85%
Route 33	65	55	85%	10	15%	0	0%	55	85%
Route 35	82	74	90%	7	9%	1	1%	75	91%
Route 36	49	44	90%	4	8%	1	2%	45	92%
Route 38	51	36	71%	15	29%	0	0%	36	71%
Route 40	56	45	80%	10	18%	1	2%	46	82%
Route 41	51	50	98%	0	0%	1	2%	51	100%
Route 42	32	32	100%	0	0%	0	0%	32	100%
Route 50	30	27	90%	3	10%	0	0%	27	90%
Route 61	22	20	91%	2	9%	0	0%	20	91%
Route 74	30	28	93%	2	7%	0	0%	28	93%
Route 79	22	21	95%	1	5%	0	0%	21	95%
Route 202	22	0	0%	22	100%	0	0%	0	0%
Route 204	28	25	89%	3	11%	0	0%	25	89%
Route 206	22	22	100%	0	0%	0	0%	22	100%
Route 208	47	35	74%	9	19%	3	6%	38	81%
Jurupa Shuttle	158	144	91%	14	9%	40	25%	144	91%
TOTAL	1,356	1,181	87%	162	12%	53	4%	1,194	88%

CONTRACTED
FIXED ROUTE ON TIME PERFORMANCE
(Percent On Time)



CONTRACTED DAR ON TIME PERFORMANCE FOR MAY 2006

Dial-A-Ride	Total Line Checks	Number On Time	Percent On Time	Number Late	Percent Late	Number Early	Percent Early
Calimesa - Yucaipa, Redlands	8	7	88%	1	13%	0	0%
Hemet - Homeland, Romoland, San Jacinto, Valle Vista, Winchester	3423	3043	89%	380	11%	55	2%
Jurupa - Belltown, Glen Avon, Pedley, Rubidoux, Mira Loma	447	382	85%	65	15%	11	2%
Lake Elsinore - Canyon Lake, Wildomar, Quail Valley	959	846	88%	113	12%	17	2%
Moreno Valley - Canyon Springs, MAFB	2753	2358	86%	395	14%	62	2%
Murrieta - Temecula	1768	1524	86%	244	14%	34	2%
Corona - Norco	1306	1140	87%	166	13%	27	2%
Perris - Mead Valley, Nuevo	1657	1434	87%	223	13%	50	3%
Sun City - Menifee	1056	935	89%	121	11%	12	1%
Banning - Beaumont	5	5	100%	0	0%	1	20%
Grand Terrace - High Grove, Loma Linda, Colton, Redlands	281	229	81%	52	19%	13	5%
Riverside - Canyon Crest, Arnold Heights, Orangecrest, Woodcrest	3526	2973	84%	553	16%	104	3%
TOTAL	17,189	14,876	87%	2,313	13%	386	2%

CONTRACTED DAR ON TIME PERFORMANCE

