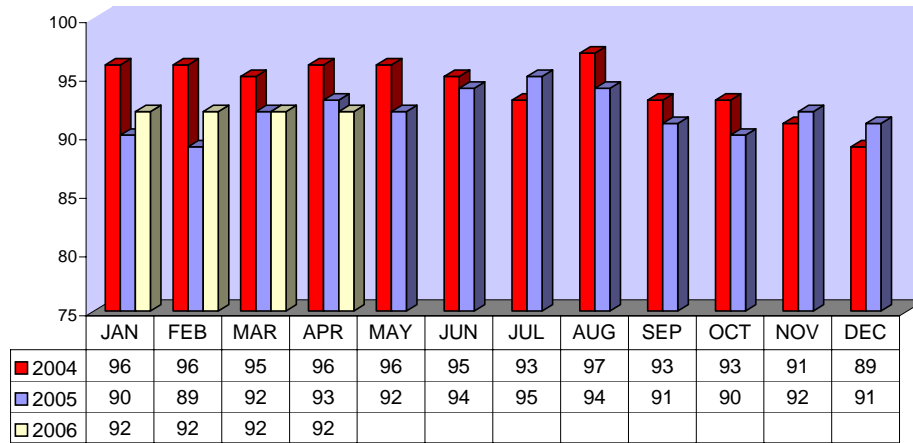


Directly Operated Fixed Route On Time Performance April 2006

<i>Line</i>	<i>Total Line Checks</i>	<i>Number On Time</i>	<i>Percent On Time</i>	<i>Number Late</i>	<i>Percent Late</i>	<i>Number Ahead</i>	<i>Percent Ahead</i>	<i>Total On Time</i>	<i>Percent On Time</i>
1	568	484	85%	42	7%	42	7%	526	93%
9 (18A)	64	59	92%	5	8%	0	0%	59	92%
10	165	141	85%	17	10%	7	4%	148	90%
12	155	135	87%	14	9%	6	4%	141	91%
13	156	140	90%	10	6%	6	4%	146	94%
14	119	101	85%	15	13%	3	3%	104	87%
15	214	194	91%	15	7%	5	2%	199	93%
16	315	271	86%	23	7%	21	7%	292	93%
17	43	40	93%	2	5%	1	2%	41	95%
18	55	54	98%	0	0%	1	2%	55	100%
19	106	97	92%	3	3%	6	6%	103	97%
20	84	71	85%	12	14%	1	1%	72	86%
21	84	76	90%	8	10%	0	0%	76	90%
22	157	143	91%	6	4%	8	5%	151	96%
25	54	48	89%	4	7%	2	4%	50	93%
27	163	114	70%	30	18%	19	12%	133	82%
29	55	53	96%	2	4%	0	0%	53	96%
49 (4)	99	85	86%	10	10%	4	4%	89	90%
149 (11)	52	39	75%	7	13%	6	12%	45	87%
TOTAL	2708	2345	87%	225	8%	138	5%	2483	92%

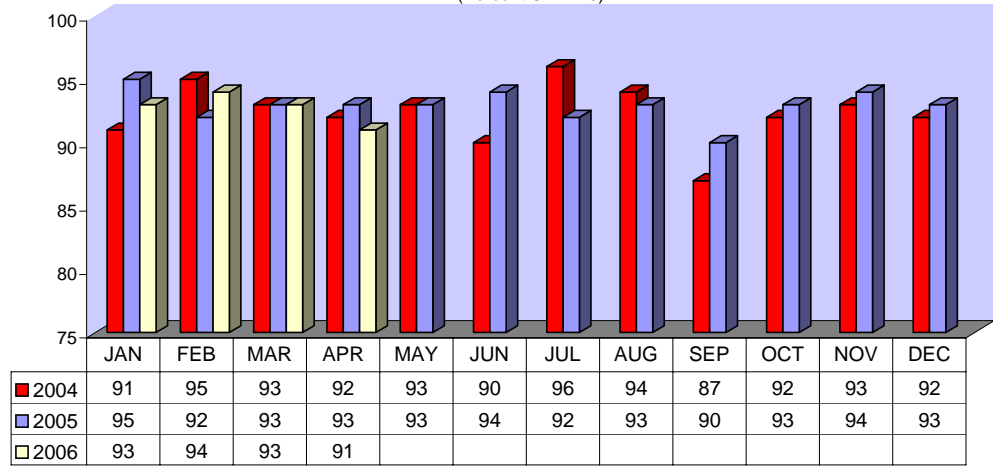
**DIRECTLY OPERATED FIXED ROUTE ON TIME PERFORMANCE
(Percent On Time)**



CONTRACTED FIXED ROUTE ON TIME PERFORMANCE FOR APRIL 2006

Line	Total Line Checks	Number On Time	Percent On Time	Number Late	Percent Late	Number Early	Percent Early	Total On Time	Percent On Time
Route 3	47	45	96%	2	4%	0	0%	45	96%
Route 7	64	54	84%	10	16%	0	0%	54	84%
Route 8	49	44	90%	5	10%	0	0%	44	90%
Route 23	59	54	92%	5	8%	0	0%	54	92%
Route 24	59	54	92%	5	8%	0	0%	54	92%
Route 30	81	75	93%	6	7%	0	0%	75	93%
Route 31	64	60	94%	3	5%	1	2%	61	95%
Route 32	75	57	76%	17	23%	1	1%	58	77%
Route 33	51	48	94%	3	6%	0	0%	48	94%
Route 35	77	75	97%	2	3%	0	0%	75	97%
Route 36	50	43	86%	5	10%	2	4%	45	90%
Route 38	37	32	86%	5	14%	0	0%	32	86%
Route 40	50	45	90%	5	10%	0	0%	45	90%
Route 41	44	38	86%	6	14%	0	0%	38	86%
Route 42	43	41	95%	2	5%	0	0%	41	95%
Route 50	25	23	92%	2	8%	0	0%	23	92%
Route 61	20	20	100%	0	0%	0	0%	20	100%
Route 74	33	32	97%	1	3%	0	0%	32	97%
Route 79	20	15	75%	5	25%	0	0%	15	75%
Route 202	20	19	95%	1	5%	0	0%	19	95%
Route 204	32	27	84%	3	9%	2	6%	29	91%
Route 206	20	20	100%	0	0%	0	0%	20	100%
Route 208	60	45	75%	15	25%	0	0%	45	75%
Jurupa Shuttle	157	144	92%	13	8%	4	3%	148	94%
TOTAL	1,237	1,110	90%	121	10%	10	1%	1,120	91%

CONTRACTED
FIXED ROUTE ON TIME PERFORMANCE
(Percent On Time)



CONTRACTED DAR ON TIME PERFORMANCE FOR APRIL 2006

Dial-A-Ride	Total Line Checks	Number On Time	Percent On Time	Number Late	Percent Late	Number Early	Percent Early
Calimesa - Yucaipa, Redlands	6	4	67%	2	33%	0	0%
Hemet - Homeland, Romoland, San Jacinto, Valle Vista, Winchester	3006	2756	92%	250	8%	35	1%
Jurupa - Belltown, Glen Avon, Pedley, Rubidoux, Mira Loma	423	367	87%	56	13%	11	3%
Lake Elsinore - Canyon Lake, Wildomar, Quail Valley	835	772	92%	63	8%	23	3%
Moreno Valley - Canyon Springs, MAFB	2298	2035	89%	263	11%	30	1%
Murrieta - Temecula	1377	1245	90%	132	10%	25	2%
Corona - Norco	1112	983	88%	129	12%	23	2%
Perris - Mead Valley, Nuevo	1484	1336	90%	148	10%	29	2%
Sun City - Menifee	925	847	92%	78	8%	9	1%
Banning - Beaumont	11	9	82%	2	18%	0	0%
Grand Terrace - High Grove, Loma Linda, Colton, Redlands	283	242	86%	41	14%	10	4%
Riverside - Canyon Crest, Arnold Heights, Orangecrest, Woodcrest	3112	2693	87%	419	13%	75	2%
TOTAL	14,872	13,289	89%	1,583	11%	270	2%

CONTRACTED DAR ON TIME PERFORMANCE

