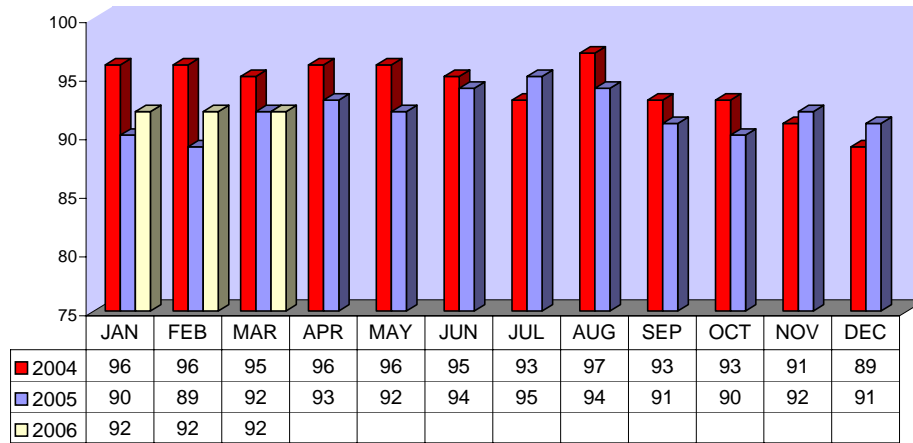


Directly Operated Fixed Route On Time Performance March 2006

<i>Line</i>	<i>Total Line Checks</i>	<i>Number On Time</i>	<i>Percent On Time</i>	<i>Number Late</i>	<i>Percent Late</i>	<i>Number Ahead</i>	<i>Percent Ahead</i>	<i>Total On Time</i>	<i>Percent On Time</i>
1	577	502	87%	53	9%	22	4%	524	91%
9 (18A)	60	55	92%	5	8%	0	0%	55	92%
10	184	153	83%	26	14%	5	3%	158	86%
12	181	165	91%	15	8%	1	1%	166	92%
13	174	161	93%	7	4%	6	3%	167	96%
14	130	118	91%	9	7%	3	2%	121	93%
15	224	203	91%	14	6%	7	3%	210	94%
16	351	293	83%	15	4%	43	12%	336	96%
17	58	55	95%	0	0%	3	5%	58	100%
18	59	54	92%	3	5%	2	3%	56	95%
19	135	120	89%	11	8%	4	3%	124	92%
20	99	87	88%	12	12%	0	0%	87	88%
21	84	76	90%	7	8%	1	1%	77	92%
22	140	124	89%	7	5%	9	6%	133	95%
25	44	42	95%	1	2%	1	2%	43	98%
27	176	145	82%	19	11%	12	7%	157	89%
29	44	43	98%	0	0%	1	2%	44	100%
49 (4)	120	106	88%	11	9%	3	3%	109	91%
149 (11)	48	38	79%	3	6%	7	15%	45	94%
TOTAL	2888	2540	88%	218	8%	130	5%	2670	92%

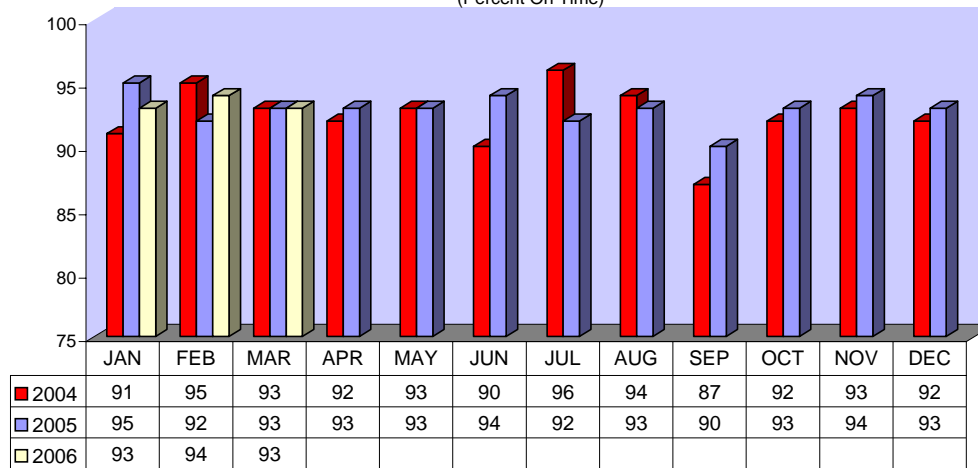
**DIRECTLY OPERATED FIXED ROUTE ON TIME PERFORMANCE
(Percent On Time)**



CONTRACTED FIXED ROUTE ON TIME PERFORMANCE FOR MARCH 2006

Line	Total Line Checks	Number On Time	Percent On Time	Number Late	Percent Late	Number Early	Percent Early	Total On Time	Percent On Time
Route 3	71	66	93%	5	7%	0	0%	66	93%
Route 7	92	82	89%	10	11%	0	0%	82	89%
Route 8	86	80	93%	6	7%	0	0%	80	93%
Route 23	91	84	92%	7	8%	0	0%	84	92%
Route 24	88	84	95%	4	5%	0	0%	84	95%
Route 30	77	73	95%	4	5%	0	0%	73	95%
Route 31	95	86	91%	9	9%	0	0%	86	91%
Route 32	96	90	94%	6	6%	0	0%	90	94%
Route 33	75	70	93%	5	7%	0	0%	70	93%
Route 35	76	72	95%	4	5%	0	0%	72	95%
Route 36	73	68	93%	5	7%	0	0%	68	93%
Route 38	67	59	88%	8	12%	0	0%	59	88%
Route 40	66	61	92%	5	8%	0	0%	61	92%
Route 41	69	62	90%	7	10%	0	0%	62	90%
Route 42	74	70	95%	4	5%	0	0%	70	95%
Route 50	53	50	94%	3	6%	0	0%	50	94%
Route 61	23	22	96%	1	4%	0	0%	22	96%
Route 74	23	23	100%	0	0%	0	0%	23	100%
Route 79	23	23	100%	0	0%	0	0%	23	100%
Route 202	23	23	100%	0	0%	0	0%	23	100%
Route 204	23	23	100%	0	0%	0	0%	23	100%
Route 206	23	23	100%	0	0%	0	0%	23	100%
Route 208	23	23	100%	0	0%	0	0%	23	100%
Jurupa Shuttle	239	222	93%	0	0%	1	0%	223	93%
TOTAL	1,649	1,539	93%	93	6%	1	0%	1,540	93%

CONTRACTED
FIXED ROUTE ON TIME PERFORMANCE
(Percent On Time)



CONTRACTED DAR ON TIME PERFORMANCE FOR MARCH 2006

Dial-A-Ride	Total Line Checks	Number On Time	Percent On Time	Number Late	Percent Late	Number Early	Percent Early
Calimesa - Yucaipa, Redlands	11	10	91%	1	9%	1	9%
Hemet - Homeland, Romoland, San Jacinto, Valle Vista, Winchester	3328	3107	93%	221	7%	131	4%
Jurupa - Belltown, Glen Avon, Pedley, Rubidoux, Mira Loma	571	466	82%	105	18%	31	5%
Lake Elsinore - Canyon Lake, Wildomar, Quail Valley	884	762	86%	122	14%	42	5%
Moreno Valley - Canyon Springs, MAFB	2432	2134	88%	298	12%	133	5%
Murrieta - Temecula	1482	1246	84%	236	16%	85	6%
Corona - Norco	1311	1120	85%	191	15%	70	5%
Perris - Mead Valley, Nuevo	1682	1510	90%	172	10%	134	8%
Sun City - Menifee	987	875	89%	112	11%	31	3%
Banning - Beaumont	6	6	100%	0	0%	0	0%
Grand Terrace - High Grove, Loma Linda, Colton, Redlands	211	180	85%	31	15%	27	13%
Riverside - Canyon Crest, Arnold Heights, Orangecrest, Woodcrest	3311	2809	85%	502	15%	213	6%
TOTAL	16,216	14,225	88%	1,991	12%	898	6%

CONTRACTED DAR ON TIME PERFORMANCE

