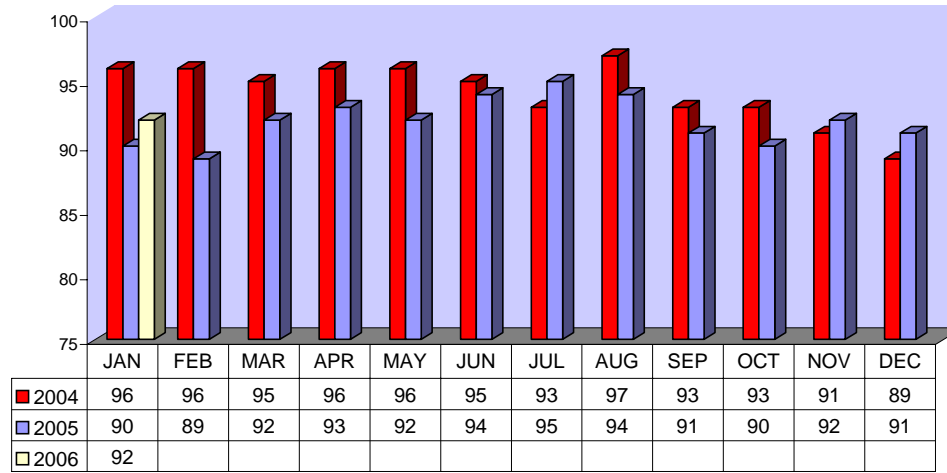


Fixed Route On Time Performance For January 2006

<i>Line</i>	<i>Total Line Checks</i>	<i>Number On Time</i>	<i>Percent On Time</i>	<i>Number Late</i>	<i>Percent Late</i>	<i>Number Ahead</i>	<i>Percent Ahead</i>	<i>Total On Time</i>	<i>Percent On Time</i>
1	517	457	88%	47	9%	13	3%	470	91%
9 (18A)	95	84	88%	8	8%	3	3%	87	92%
10	157	136	87%	20	13%	1	1%	137	87%
12	153	126	82%	25	16%	2	1%	128	84%
13	136	128	94%	8	6%	0	0%	128	94%
14	97	90	93%	5	5%	2	2%	92	95%
15	218	208	95%	9	4%	1	0%	209	96%
16	345	294	85%	16	5%	35	10%	329	95%
17	79	77	97%	2	3%	0	0%	77	97%
18	60	54	90%	4	7%	2	3%	56	93%
19	125	111	89%	13	10%	1	1%	112	90%
20	119	97	82%	19	16%	3	3%	100	84%
21	69	63	91%	5	7%	1	1%	64	93%
22	165	139	84%	18	11%	8	5%	147	89%
25	53	51	96%	2	4%	0	0%	51	96%
27	182	155	85%	17	9%	10	5%	165	91%
29	43	42	98%	1	2%	0	0%	42	98%
49 (4)	92	85	92%	6	7%	1	1%	86	93%
149 (11)	47	38	81%	2	4%	7	15%	45	96%
TOTAL	2752	2435	88%	227	8%	90	3%	2525	92%

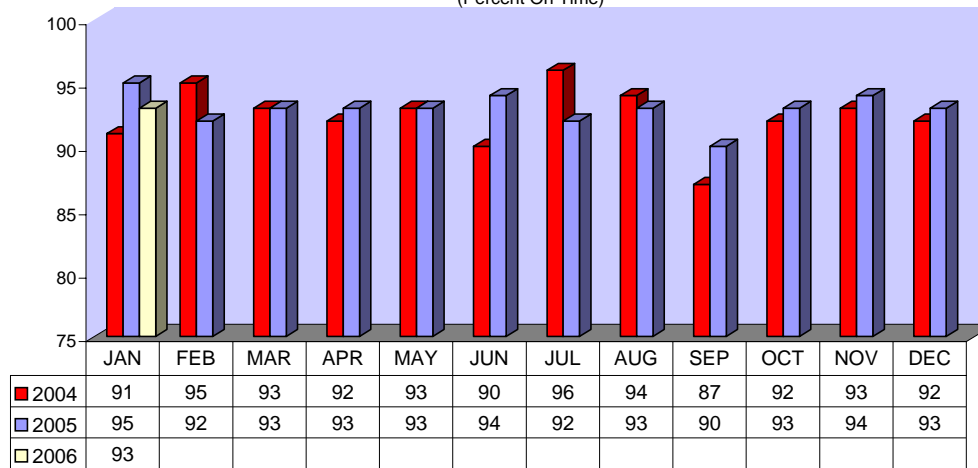
FIXED ROUTE ON TIME PERFORMANCE
(Percent On Time)



CONTRACTED FIXED ROUTE ON TIME PERFORMANCE FOR DECEMBER 2005

Line	Total Line Checks	Number On Time	Percent On Time	Number Late	Percent Late	Number Early	Percent Early	Total On Time	Percent On Time
Route 3	71	63	89%	7	10%	1	1%	64	90%
Route 7	92	87	95%	5	5%	0	0%	87	95%
Route 8	96	90	94%	6	6%	0	0%	90	94%
Route 23	96	92	96%	4	4%	0	0%	92	96%
Route 24	94	87	93%	7	7%	0	0%	87	93%
Route 30	78	71	91%	7	9%	0	0%	71	91%
Route 31	87	80	92%	7	8%	0	0%	80	92%
Route 32	92	85	92%	7	8%	0	0%	85	92%
Route 33	72	67	93%	5	7%	0	0%	67	93%
Route 35	72	68	94%	4	6%	0	0%	68	94%
Route 36	67	63	94%	4	6%	0	0%	63	94%
Route 38	63	57	90%	6	10%	0	0%	57	90%
Route 40	57	52	91%	5	9%	0	0%	52	91%
Route 41	56	51	91%	5	9%	0	0%	51	91%
Route 42	65	62	95%	3	5%	0	0%	62	95%
Route 50	39	36	92%	3	8%	0	0%	36	92%
Route 61	22	21	95%	1	5%	0	0%	21	95%
Route 74	22	22	100%	0	0%	0	0%	22	100%
Route 79	22	21	95%	1	5%	0	0%	21	95%
Route 202	22	22	100%	0	0%	0	0%	22	100%
Route 204	22	20	91%	2	9%	0	0%	20	91%
Route 206	22	22	100%	0	0%	0	0%	22	100%
Route 208	22	22	100%	0	0%	0	0%	22	100%
Jurupa Shuttle	221	197	89%	23	10%	1	0%	198	90%
TOTAL	1,572	1,458	93%	112	7%	2	0%	1460	93%

CONTRACTED
FIXED ROUTE ON TIME PERFORMANCE
(Percent On Time)



CONTRACTED DAR ON TIME PERFORMANCE FOR JANUARY 2006

Dial-A-Ride	Total Line Checks	Number On Time	Number Late	Percent Late	Number Early	Percent Early	Percent On Time
Calimesa - Yucaipa, Redlands	11	8	3	27%	0	0%	73%
Hemet - Homeland, Romoland, San Jacinto, Valle Vista, Winchester	3264	2996	242	7%	26	1%	92%
Jurupa - Belltown, Glen Avon, Pedley, Rubidoux, Mira Loma	412	357	55	13%	0	0%	87%
Lake Elsinore - Canyon Lake, Wildomar, Quail Valley	824	746	75	9%	3	0%	91%
Moreno Valley - Canyon Springs, MAFB	2219	1922	286	13%	11	0%	87%
Murrieta - Temecula	1354	1184	167	12%	3	0%	87%
Corona - Norco	1144	966	175	15%	3	0%	84%
Perris - Mead Valley, Nuevo	1476	1284	145	10%	47	3%	87%
Sun City - Menifee	1009	928	80	8%	1	0%	92%
Banning - Beaumont	4	4	0	0%	0	0%	100%
Grand Terrace - High Grove, Loma Linda, Colton, Redlands	203	157	45	22%	1	0%	77%
Riverside - Canyon Crest, Arnold Heights, Orangecrest, Woodcrest	2846	2296	534	19%	16	1%	81%
TOTAL	14,766	12,848	1,807	12%	111	1%	87%

CONTRACTED DAR ON TIME PERFORMANCE

