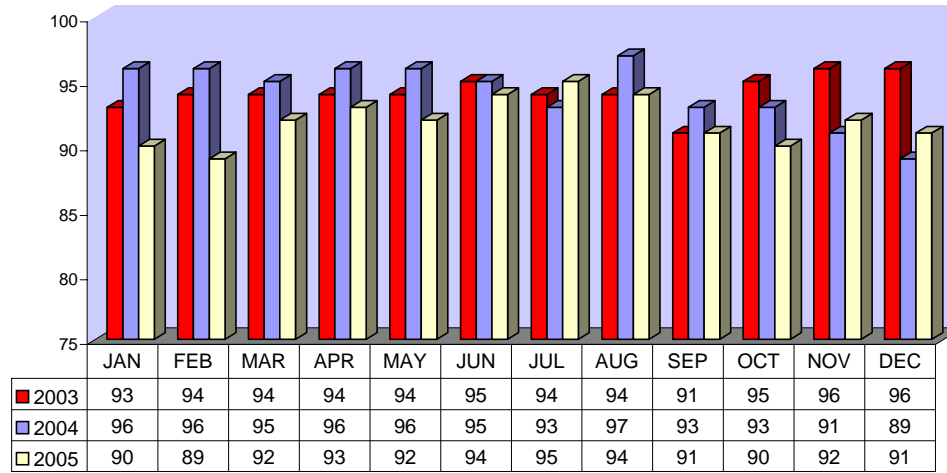


**Fixed Route On Time Performance For December 2005**

<i>Line</i>	<i>Total Line Checks</i>	<i>Number On Time</i>	<i>Percent On Time</i>	<i>Number Late</i>	<i>Percent Late</i>	<i>Number Ahead</i>	<i>Percent Ahead</i>	<i>Total On Time</i>	<i>Percent On Time</i>
1	497	417	84%	62	12%	18	4%	435	88%
9 (18A)	77	71	92%	5	6%	1	1%	72	94%
10	143	114	80%	28	20%	1	1%	115	80%
12	151	123	81%	28	19%	0	0%	123	81%
13	151	140	93%	10	7%	1	1%	141	93%
14	110	99	90%	8	7%	3	3%	102	93%
15	208	195	94%	12	6%	1	0%	196	94%
16	300	263	88%	13	4%	24	8%	287	96%
17	66	63	95%	3	5%	0	0%	63	95%
18	57	55	96%	0	0%	2	4%	57	100%
19	116	102	88%	10	9%	4	3%	106	91%
20	121	103	85%	15	12%	3	2%	106	88%
21	63	57	90%	3	5%	3	5%	60	95%
22	113	98	87%	8	7%	7	6%	105	93%
25	50	46	92%	4	8%	0	0%	46	92%
27	133	116	87%	9	7%	8	6%	124	93%
29	49	45	92%	4	8%	0	0%	45	92%
49 (4)	83	80	96%	3	4%	0	0%	80	96%
149 (11)	38	30	79%	2	5%	6	16%	36	95%
<b>TOTAL</b>	<b>2526</b>	<b>2217</b>	<b>88%</b>	<b>227</b>	<b>9%</b>	<b>82</b>	<b>3%</b>	<b>2299</b>	<b>91%</b>

\* Any bus going by a mall/large shopping center dropped in On Time Performance except route 16.

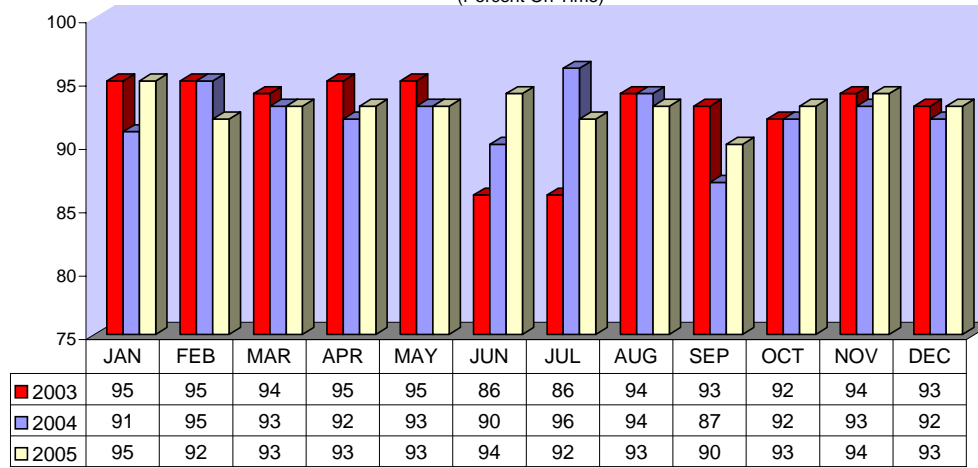
FIXED ROUTE ON TIME PERFORMANCE  
(Percent On Time)



**CONTRACTED FIXED ROUTE ON TIME PERFORMANCE FOR DECEMBER 2005**

<b>Line</b>	<b>Total Line Checks</b>	<b>Number On Time</b>	<b>Percent On Time</b>	<b>Number Late</b>	<b>Percent Late</b>	<b>Number Early</b>	<b>Percent Early</b>	<b>Total On Time</b>	<b>Percent On Time</b>
Route 3	93	89	96%	4	4%	0	0%	89	96%
Route 7	111	107	96%	4	4%	0	0%	107	96%
Route 8	95	90	95%	5	5%	0	0%	90	95%
Route 23	85	80	94%	5	6%	0	0%	80	94%
Route 24	82	73	89%	9	11%	0	0%	73	89%
Route 30	77	73	95%	4	5%	0	0%	73	95%
Route 31	89	82	92%	7	8%	0	0%	82	92%
Route 32	81	75	93%	6	7%	0	0%	75	93%
Route 33	70	64	91%	6	9%	0	0%	64	91%
Route 35	74	67	91%	7	9%	0	0%	67	91%
Route 36	69	63	91%	6	9%	0	0%	63	91%
Route 38	66	61	92%	5	8%	0	0%	61	92%
Route 40	64	57	89%	7	11%	0	0%	57	89%
Route 41	57	54	95%	3	5%	0	0%	54	95%
Route 42	64	60	94%	4	6%	0	0%	60	94%
Route 50	42	40	95%	2	5%	0	0%	40	95%
Route 61	21	21	100%	1	5%	0	0%	21	100%
Route 74	22	22	100%	1	5%	0	0%	22	100%
Route 79	21	21	100%	2	10%	0	0%	21	100%
Route 202	23	23	100%	0	0%	0	0%	23	100%
Route 204	21	21	100%	1	5%	0	0%	21	100%
Route 206	22	22	100%	0	0%	0	0%	22	100%
Route 208	21	21	100%	1	5%	0	0%	21	100%
Jurupa Shuttle	203	184	91%	19	9%	1	0%	184	91%
<b>TOTAL</b>	<b>1,573</b>	<b>1,470</b>	<b>93%</b>	<b>109</b>	<b>7%</b>	<b>1</b>	<b>0%</b>	<b>1470</b>	<b>93%</b>

CONTRACTED  
FIXED ROUTE ON TIME PERFORMANCE  
(Percent On Time)



**CONTRACTED DAR ON TIME PERFORMANCE FOR DECEMBER 2005**

<b>Dial-A-Ride</b>	<b>Total Line Checks</b>	<b>Number On Time</b>	<b>Number Late</b>	<b>Percent Late</b>	<b>Number Early</b>	<b>Percent Early</b>	<b>Percent On Time</b>
<b>Calimesa</b> - Yucaipa, Redlands	13	13	0	0%	0	0%	100%
<b>Hemet</b> - Homeland, Romoland, San Jacinto, Valle Vista, Winchester	3138	2851	287	9%	17	1%	91%
<b>Jurupa</b> - Belltown, Glen Avon, Pedley, Rubidoux, Mira Loma	451	385	66	15%	1	0%	85%
<b>Lake Elsinore</b> - Canyon Lake, Wildomar, Quail Valley	880	822	58	7%	9	1%	93%
<b>Moreno Valley</b> - Canyon Springs, MAFB	2244	1959	285	13%	14	1%	87%
<b>Murrieta</b> - Temecula	1260	1085	175	14%	5	0%	86%
<b>Corona</b> - Norco	1069	927	142	13%	5	0%	87%
<b>Perris</b> - Mead Valley, Nuevo	1396	1262	134	10%	21	2%	90%
<b>Sun City</b> - Menifee	939	864	75	8%	3	0%	92%
<b>Banning</b> - Beaumont	4	3	1	25%	0	0%	75%
<b>Grand Terrace</b> - High Grove, Loma Linda, Colton, Redlands	194	161	33	17%	3	2%	83%
<b>Riverside</b> - Canyon Crest, Arnold Heights, Orangecrest, Woodcrest	2725	2281	444	16%	17	1%	84%
<b>TOTAL</b>	<b>14,313</b>	<b>12,613</b>	<b>1,700</b>	<b>12%</b>	<b>95</b>	<b>1%</b>	<b>88%</b>

**CONTRACTED DAR ON TIME PERFORMANCE**

