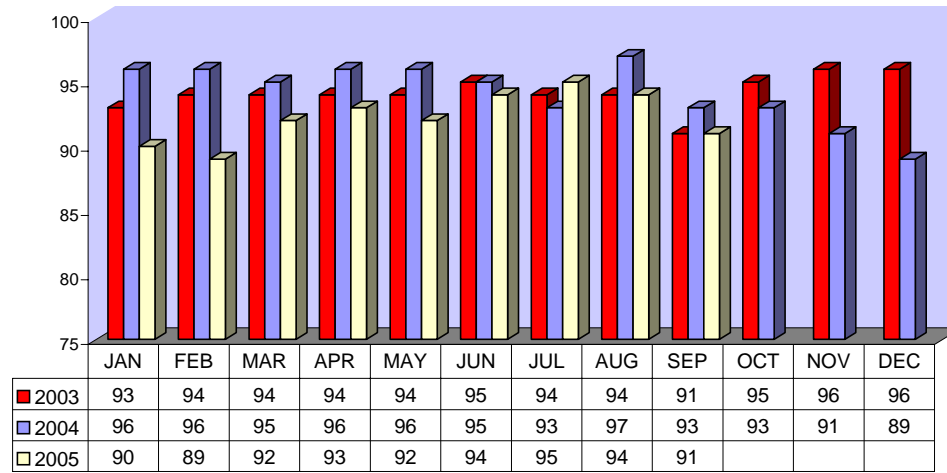


**Fixed Route On Time Performance For September 2005**

<i>Line</i>	<i>Total Line Checks</i>	<i>Number On Time</i>	<i>Percent On Time</i>	<i>Number Late</i>	<i>Percent Late</i>	<i>Number Ahead</i>	<i>Percent Ahead</i>	<i>Total On Time</i>	<i>Percent On Time</i>
1	475	409	86%	52	11%	14	3%	423	89%
9 (18A)	114	112	98%	1	1%	1	1%	113	99%
10	163	121	74%	39	24%	3	2%	124	76%
12	178	137	77%	37	21%	4	2%	141	79%
13	164	146	89%	16	10%	2	1%	148	90%
14	132	117	89%	12	9%	3	2%	120	91%
15	218	198	91%	15	7%	5	2%	203	93%
16	316	279	88%	13	4%	24	8%	303	96%
17	57	50	88%	6	11%	1	2%	51	89%
18	79	76	96%	1	1%	2	3%	78	99%
19	181	171	94%	8	4%	2	1%	173	96%
20	91	77	85%	12	13%	2	2%	79	87%
21	65	64	98%	1	2%	0	0%	64	98%
22	219	198	90%	19	9%	2	1%	200	91%
25	59	50	85%	9	15%	0	0%	50	85%
27	252	227	90%	19	8%	6	2%	233	92%
29	56	53	95%	3	5%	0	0%	53	95%
49	100	98	98%	2	2%	0	0%	98	98%
149	43	30	70%	4	9%	9	21%	39	91%
<b>TOTAL</b>	<b>2962</b>	<b>2613</b>	<b>88%</b>	<b>269</b>	<b>9%</b>	<b>80</b>	<b>3%</b>	<b>2693</b>	<b>91%</b>

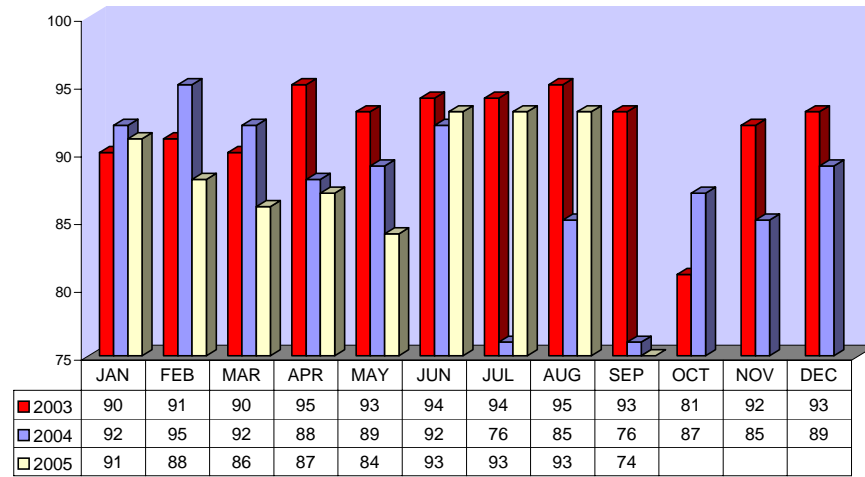
FIXED ROUTE ON TIME PERFORMANCE  
(Percent On Time)



**CONTRACTED DAR ON TIME PERFORMANCE FOR SEPTEMBER 2005**

Dial-A-Ride	Total Line Checks	Number		Percent Late	Number Early	Percent Early	Percent On Time
		On Time	Number Late				
Calimesa - Yucaipa, Redlands	5	4	1	20%	0	0%	80%
Hemet - Homeland, Romoland, San Jacinto, Valle Vista, Winchester	4094	3003	426	10%	665	16%	73%
Jurupa - Belltown, Glen Avon, Pedley, Rubidoux, Mira Loma	518	383	89	17%	46	9%	74%
Lake Elsinore - Canyon Lake, Wildomar, Quail Valley	1211	954	100	8%	157	13%	79%
Moreno Valley - Canyon Springs, MAFB	2772	2011	491	18%	270	10%	73%
Murrieta - Temecula	1520	1119	199	13%	202	13%	74%
Corona - Norco	1385	976	258	19%	151	11%	70%
Perris - Mead Valley, Nuevo	1567	1203	189	12%	175	11%	77%
Sun City - Menifee	990	788	90	9%	112	11%	80%
Banning - Beaumont	2	2	0	0%	0	0%	100%
Grand Terrace - High Grove, Loma Linda, Colton, Redlands	224	176	25	11%	23	10%	79%
Riverside - Canyon Crest, Arnold Heights, Orangecrest, Woodcrest	3001	2140	576	19%	285	9%	71%
<b>TOTAL</b>	<b>17,289</b>	<b>12,759</b>	<b>2,444</b>	<b>14%</b>	<b>2,086</b>	<b>12%</b>	<b>74%</b>

CONTRACTED DAR ON TIME PERFORMANCE



**CONTRACTED FIXED ROUTE ON TIME PERFORMANCE FOR SEPTEMBER 2005**

Line	Total Line Checks	Number On Time	Number Late	Percent Late	Number Early	Percent Early	Percent On Time
Route 3	88	77	11	13%	0	0%	88%
Route 7	91	82	9	10%	0	0%	90%
Route 8	90	80	10	11%	0	0%	89%
Route 23	113	105	8	7%	0	0%	93%
Route 24	95	90	5	5%	0	0%	95%
Route 30	101	93	8	8%	0	0%	92%
Route 31	137	128	9	7%	0	0%	93%
Route 32	106	103	3	3%	0	0%	97%
Route 33	80	75	5	6%	0	0%	94%
Route 35	65	63	2	3%	0	0%	97%
Route 36	88	85	3	3%	0	0%	97%
Route 38	74	69	5	7%	0	0%	93%
Route 40	70	66	4	6%	0	0%	94%
Route 41	70	66	4	6%	0	0%	94%
Route 42	63	63	0	0%	0	0%	100%
Route 50	45	45	0	0%	0	0%	100%
Route 61	21	21	0	0%	0	0%	100%
Route 74	21	5	16	76%	0	0%	24%
Route 79	23	20	3	13%	0	0%	87%
Route 202	21	21	0	0%	0	0%	100%
Route 204	21	21	0	0%	0	0%	100%
Route 206	21	21	0	0%	0	0%	100%
Route 208	21	21	0	0%	0	0%	100%
Jurupa Shuttle	305	236	0	0%	28	9%	77%
<b>TOTAL</b>	<b>1,830</b>	<b>1656</b>	<b>105</b>	<b>6%</b>	<b>28</b>	<b>2%</b>	<b>90%</b>

CONTRACTED  
FIXED ROUTE ON TIME PERFORMANCE  
(Percent On Time)

