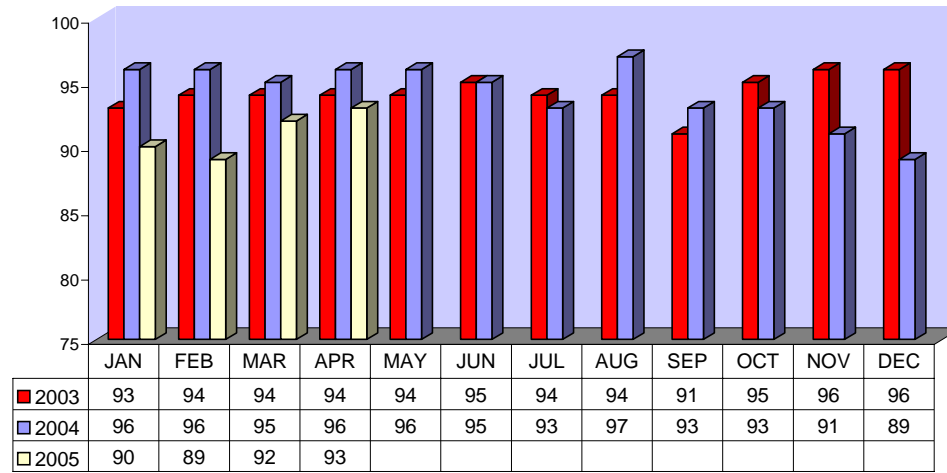


Fixed Route On Time Performance For April 2005

<i>Line</i>	<i>Total Line Checks</i>	<i>Number On Time</i>	<i>Percent On Time</i>	<i>Number Late</i>	<i>Percent Late</i>	<i>Number Ahead</i>	<i>Percent Ahead</i>	<i>Total On Time</i>	<i>Percent On Time</i>
1	589	506	86%	55	9%	28	5%	534	91%
9 (18A)	123	117	95%	5	4%	1	1%	118	96%
10	137	114	83%	22	16%	1	1%	115	84%
12	179	153	85%	22	12%	4	2%	157	88%
13	203	183	90%	16	8%	4	2%	187	92%
14	127	113	89%	12	9%	2	2%	115	91%
15	237	215	91%	20	8%	2	1%	217	92%
16	400	359	90%	15	4%	26	7%	385	96%
17	63	59	94%	4	6%	0	0%	59	94%
18	104	103	99%	1	1%	0	0%	103	99%
19	204	193	95%	10	5%	1	0%	194	95%
20	102	88	86%	13	13%	1	1%	89	87%
21	53	52	98%	1	2%	0	0%	52	98%
22	219	209	95%	5	2%	5	2%	214	98%
25	78	73	94%	5	6%	0	0%	73	94%
27	207	196	95%	8	4%	3	1%	199	96%
29	62	57	92%	3	5%	2	3%	59	95%
49	78	71	91%	7	9%	0	0%	71	91%
149	45	35	78%	0	0%	10	22%	45	100%
TOTAL	3210	2896	90%	224	7%	90	3%	2986	93%

FIXED ROUTE ON TIME PERFORMANCE
(Percent On Time)

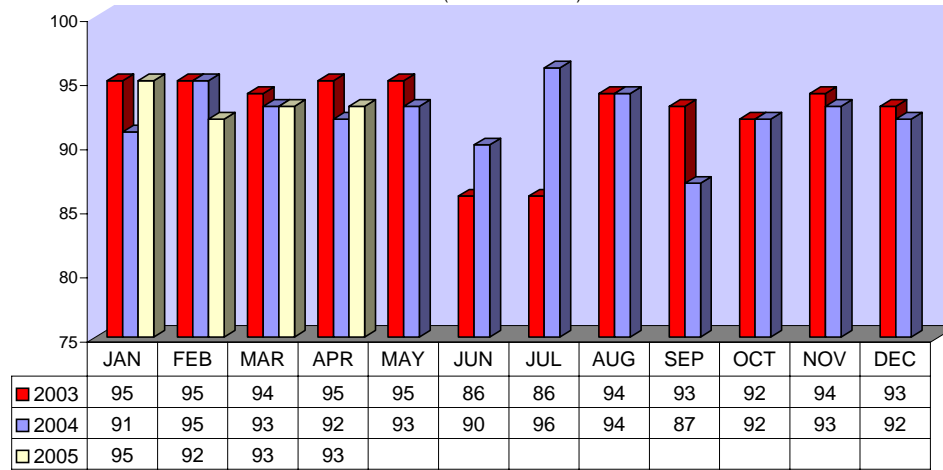


CONTRACTED FIXED ROUTE ON TIME PERFORMANCE FOR APRIL 2005

Line	Total Line Checks	Number On Time	Percent On Time	Number Late	Percent Late	Number Early	Percent Early	Total On Time	Percent On Time
Route 3	76	69	91%	7	9%	0	0%	69	91%
Route 7	61	54	89%	7	11%	0	0%	54	89%
Route 8	63	57	90%	6	10%	0	0%	57	90%
Route 23	51	51	100%	0	0%	0	0%	51	100%
Route 24	51	50	98%	1	2%	0	0%	50	98%
Route 30	58	53	91%	4	7%	1	2%	54	93%
Route 31	69	66	96%	3	4%	0	0%	66	96%
Route 32	51	47	92%	4	8%	0	0%	47	92%
Route 33	39	38	97%	1	3%	0	0%	38	97%
Route 35	30	26	87%	4	13%	0	0%	26	87%
Route 36	24	24	100%	0	0%	0	0%	24	100%
Route 38	33	33	100%	0	0%	0	0%	33	100%
Route 40	39	30	77%	9	23%	0	0%	30	77%
Route 41	52	50	96%	2	4%	0	0%	50	96%
Route 42	18	18	100%	0	0%	0	0%	18	100%
Route 43	27	27	0%	0	0%	0	0%	27	100%
Route 50	0	0	0%	0	0%	0	0%	0	0%
Route 61	21	21	100%	0	0%	0	0%	21	100%
Route 74	21	18	86%	3	14%	0	0%	18	86%
Route 79	21	20	95%	1	5%	0	0%	20	95%
Route 202	21	21	100%	0	0%	0	0%	21	100%
Route 204	21	21	100%	0	0%	0	0%	21	100%
Route 206	22	22	100%	0	0%	0	0%	22	100%
Route 208	21	21	100%	0	0%	0	0%	21	100%
Jurupa Shut	174	144	83%	19	11%	11	6%	155	89%
TOTAL	1064	981	92%	71	7%	12	1%	993	93%

On eight (8) days this month, February 11th and 12th and 18th through the 23rd, a significant amount of was experienced in the region.

CONTRACTED
FIXED ROUTE ON TIME PERFORMANCE
(Percent On Time)



CONTRACTED DAR ON TIME PERFORMANCE FOR APRIL 2005

Dial-A-Ride	Total Line Checks	Number On Time	Percent On Time	Number Late	Percent Late	Number Early	Percent Early	Total On Time	Percent On Time
Calimesa - Yucaipa, Redlands	12	9	75%	2	17%	1	8%	10	83%
Hemet - Homeland, Romoland, San Jacinto, Valle Vista, Winchester	3693	2896	78%	421	11%	376	10%	3272	89%
Jurupa - Belltown, Glen Avon, Pedley, Rubidoux, Mira Loma	770	611	79%	103	13%	56	7%	667	87%
Lake Elsinore - Canyon Lake, Wildomar, Quail Valley	1140	898	79%	152	13%	90	8%	988	87%
Moreno Valley - Canyon Springs, MAFB	2505	1966	78%	403	16%	136	5%	2102	84%
Murrieta - Temecula	1275	1017	80%	197	15%	61	5%	1078	85%
Corona - Norco	1340	1051	78%	168	13%	121	9%	1172	87%
Perris - Mead Valley, Nuevo	1759	1402	80%	176	10%	181	10%	1583	90%
Sun City - Menifee	1082	942	87%	90	8%	50	5%	992	92%
Banning - Beaumont	4	3	75%	0	0%	1	25%	4	100%
Grand Terrace - High Grove, Loma Linda, Colton, Redlands	267	207	78%	40	15%	20	7%	227	85%
Riverside - Canyon Crest, Arnold Heights, Orangecrest, Woodcrest	2924	2260	77%	451	15%	213	7%	2473	85%
TOTAL	16,771	13,262	79%	2,203	13%	1,306	8%	14,568	87%

On eight (8) days this month, February 11th and 12th and 18th through the 23rd, a significant amount of was experienced in the region.

CONTRACTED DAR ON TIME PERFORMANCE

