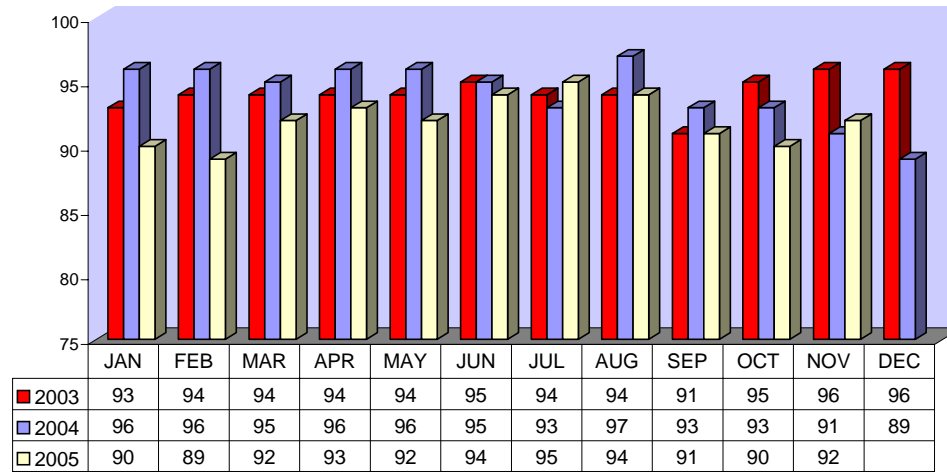


**Fixed Route On Time Performance For November 2005**

<i>Line</i>	<i>Total Line Checks</i>	<i>Number On Time</i>	<i>Percent On Time</i>	<i>Number Late</i>	<i>Percent Late</i>	<i>Number Ahead</i>	<i>Percent Ahead</i>	<i>Total On Time</i>	<i>Percent On Time</i>
1	423	371	88%	45	11%	7	2%	378	89%
9 (18A)	78	71	91%	6	8%	1	1%	72	92%
10	122	108	89%	13	11%	1	1%	109	89%
12	137	117	85%	18	13%	2	1%	119	87%
13	134	126	94%	6	4%	2	1%	128	96%
14	113	101	89%	9	8%	3	3%	104	92%
15	169	160	95%	7	4%	2	1%	162	96%
16	253	223	88%	16	6%	14	6%	237	94%
17	41	40	98%	0	0%	1	2%	41	100%
18	57	52	91%	2	4%	3	5%	55	96%
19	100	88	88%	10	10%	2	2%	90	90%
20	91	85	93%	5	5%	1	1%	86	95%
21	43	39	91%	2	5%	2	5%	41	95%
22	123	115	93%	5	4%	3	2%	118	96%
25	33	29	88%	4	12%	0	0%	29	88%
27	116	100	86%	11	9%	5	4%	105	91%
29	31	29	94%	2	6%	0	0%	29	94%
49	60	58	97%	2	3%	0	0%	58	97%
149	29	18	62%	5	17%	6	21%	24	83%
<b>TOTAL</b>	<b>2153</b>	<b>1930</b>	<b>90%</b>	<b>168</b>	<b>8%</b>	<b>55</b>	<b>3%</b>	<b>1985</b>	<b>92%</b>

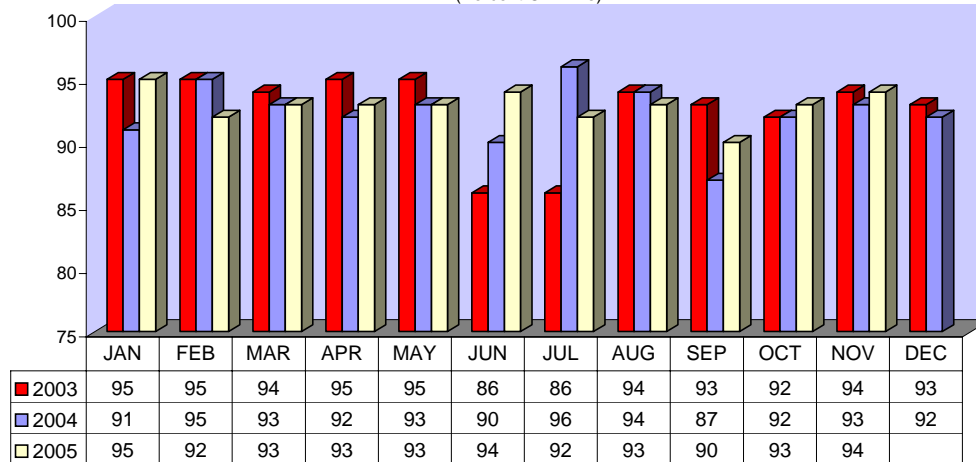
FIXED ROUTE ON TIME PERFORMANCE  
(Percent On Time)



**CONTRACTED FIXED ROUTE ON TIME PERFORMANCE FOR NOVEMBER 2005**

Line	Total Line Checks	Number On Time	Percent On Time	Number Late	Percent Late	Number Early	Percent Early	Total On Time	Percent On Time
Route 3	77	75	97%	2	3%	0	0%	75	97%
Route 7	106	101	95%	5	5%	0	0%	101	95%
Route 8	108	101	94%	7	6%	1	1%	102	94%
Route 23	126	121	96%	5	4%	0	0%	121	96%
Route 24	103	98	95%	5	5%	0	0%	98	95%
Route 30	77	72	94%	5	6%	0	0%	72	94%
Route 31	100	93	93%	7	7%	0	0%	93	93%
Route 32	75	69	92%	6	8%	0	0%	69	92%
Route 33	55	50	91%	5	9%	0	0%	50	91%
Route 35	64	60	94%	4	6%	0	0%	60	94%
Route 36	66	60	91%	6	9%	0	0%	60	91%
Route 38	50	43	86%	7	14%	0	0%	43	86%
Route 40	47	45	96%	2	4%	0	0%	45	96%
Route 41	50	47	94%	3	6%	0	0%	47	94%
Route 42	55	51	93%	4	7%	0	0%	51	93%
Route 50	37	34	92%	3	8%	0	0%	34	92%
Route 61	14	14	100%	0	0%	0	0%	14	100%
Route 74	14	14	100%	0	0%	0	0%	14	100%
Route 79	14	14	100%	0	0%	0	0%	14	100%
Route 202	14	14	100%	0	0%	0	0%	14	100%
Route 204	14	14	100%	0	0%	0	0%	14	100%
Route 206	14	14	100%	0	0%	0	0%	14	100%
Route 208	14	13	93%	1	7%	0	0%	13	93%
Jurupa Shuttle	199	187	94%	6	3%	6	3%	187	94%
<b>TOTAL</b>	<b>1,493</b>	<b>1,404</b>	<b>94%</b>	<b>83</b>	<b>6%</b>	<b>7</b>	<b>0%</b>	<b>1405</b>	<b>94%</b>

CONTRACTED  
FIXED ROUTE ON TIME PERFORMANCE  
(Percent On Time)



**CONTRACTED DAR ON TIME PERFORMANCE FOR NOVEMBER 2005**

<b>Dial-A-Ride</b>	<b>Total Line Checks</b>	<b>Number</b>		<b>Percent Late</b>	<b>Number Early</b>	<b>Percent Early</b>	<b>Percent On Time</b>
		<b>On Time</b>	<b>Number Late</b>				
<b>Calimesa</b> - Yucaipa, Redlands	10	9	1	10%	0	0%	90%
<b>Hemet</b> - Homeland, Romoland, San Jacinto, Valle Vista, Winchester	3160	2808	324	10%	28	1%	89%
<b>Jurupa</b> - Belltown, Glen Avon, Pedley, Rubidoux, Mira Loma	489	413	75	15%	1	0%	84%
<b>Lake Elsinore</b> - Canyon Lake, Wildomar, Quail Valley	956	844	109	11%	3	0%	88%
<b>Moreno Valley</b> - Canyon Springs, MAFB	2418	2003	407	17%	8	0%	83%
<b>Murrieta</b> - Temecula	1208	1048	152	13%	8	1%	87%
<b>Corona</b> - Norco	1064	926	135	13%	3	0%	87%
<b>Perris</b> - Mead Valley, Nuevo	1358	1195	149	11%	14	1%	88%
<b>Sun City</b> - Menifee	897	796	95	11%	6	1%	89%
<b>Banning</b> - Beaumont	9	7	2	22%	0	0%	78%
<b>Grand Terrace</b> - High Grove, Loma Linda, Colton, Redlands	224	178	45	20%	1	0%	79%
<b>Riverside</b> - Canyon Crest, Arnold Heights, Orangecrest, Woodcrest	2701	2161	531	20%	10	0%	80%
<b>TOTAL</b>	<b>14,494</b>	<b>12,388</b>	<b>2,025</b>	<b>14%</b>	<b>82</b>	<b>1%</b>	<b>85%</b>

**CONTRACTED DAR ON TIME PERFORMANCE**

