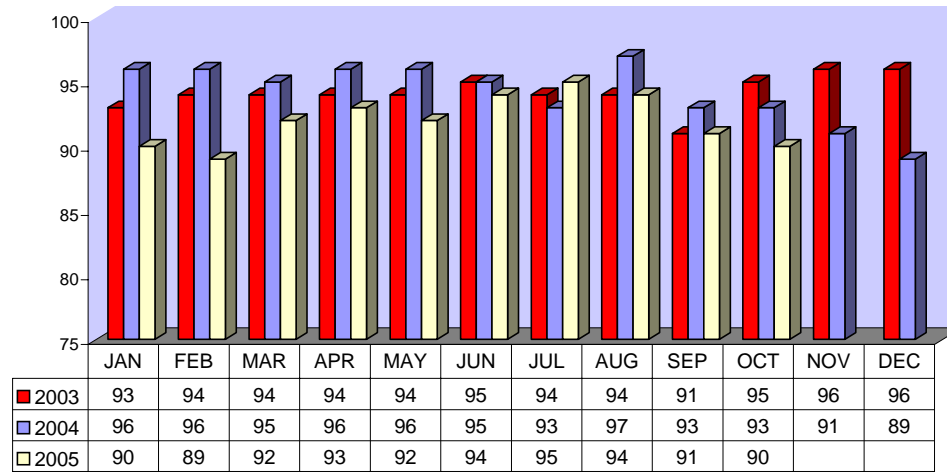


Fixed Route On Time Performance For October 2005

<i>Line</i>	<i>Total Line Checks</i>	<i>Number On Time</i>	<i>Percent On Time</i>	<i>Number Late</i>	<i>Percent Late</i>	<i>Number Ahead</i>	<i>Percent Ahead</i>	<i>Total On Time</i>	<i>Percent On Time</i>
1	491	426	87%	55	11%	10	2%	436	89%
9 (18A)	122	114	93%	7	6%	1	1%	115	94%
10	168	139	83%	27	16%	2	1%	141	84%
12	162	131	81%	29	18%	2	1%	133	82%
13	164	145	88%	18	11%	1	1%	146	89%
14	110	102	93%	8	7%	0	0%	102	93%
15	208	186	89%	20	10%	2	1%	188	90%
16	411	355	86%	24	6%	32	8%	387	94%
17	60	57	95%	3	5%	0	0%	57	95%
18	87	85	98%	1	1%	1	1%	86	99%
19	189	141	75%	48	25%	0	0%	141	75%
20	128	105	82%	20	16%	3	2%	108	84%
21	51	50	98%	0	0%	1	2%	51	100%
22	191	175	92%	13	7%	3	2%	178	93%
25	62	55	89%	5	8%	2	3%	57	92%
27	190	164	86%	19	10%	7	4%	171	90%
29	46	43	93%	1	2%	2	4%	45	98%
49	107	105	98%	1	1%	1	1%	106	99%
149	48	33	69%	4	8%	11	23%	44	92%
TOTAL	2995	2611	87%	303	10%	81	3%	2692	90%

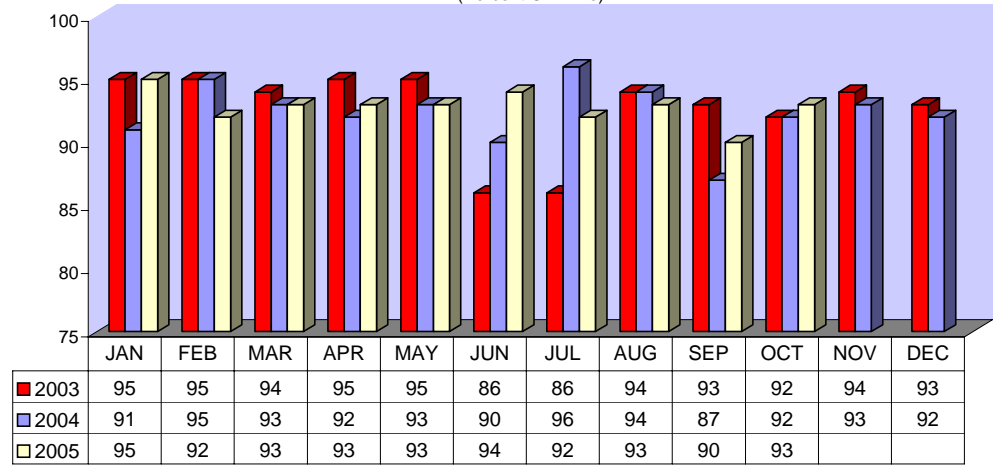
FIXED ROUTE ON TIME PERFORMANCE
(Percent On Time)



CONTRACTED FIXED ROUTE ON TIME PERFORMANCE FOR OCTOBER 2005

Line	Total Line Checks	Number On Time	Percent On Time	Number Late	Percent Late	Number Early	Percent Early	Total On Time	Percent On Time
Route 3	94	92	98%	2	2%	0	0%	92	98%
Route 7	114	108	95%	4	4%	2	2%	110	96%
Route 8	101	95	94%	6	6%	0	0%	95	94%
Route 23	113	105	93%	8	7%	0	0%	105	93%
Route 24	95	90	95%	5	5%	0	0%	90	95%
Route 30	99	91	92%	8	8%	0	0%	91	92%
Route 31	137	128	93%	9	7%	0	0%	128	93%
Route 32	106	103	97%	3	3%	0	0%	103	97%
Route 33	80	75	94%	5	6%	0	0%	75	94%
Route 35	62	60	97%	2	3%	0	0%	60	97%
Route 36	87	84	97%	3	3%	0	0%	84	97%
Route 38	70	65	93%	5	7%	0	0%	65	93%
Route 40	70	66	94%	4	6%	0	0%	66	94%
Route 41	68	64	94%	4	6%	0	0%	64	94%
Route 42	61	61	100%	0	0%	0	0%	61	100%
Route 50	55	55	100%	0	0%	0	0%	55	100%
Route 61	21	21	100%	0	0%	0	0%	21	100%
Route 74	21	21	100%	0	0%	0	0%	21	100%
Route 79	21	21	100%	0	0%	0	0%	21	100%
Route 202	21	21	100%	0	0%	0	0%	21	100%
Route 204	21	21	100%	0	0%	0	0%	21	100%
Route 206	23	20	87%	3	13%	0	0%	20	87%
Route 208	21	21	100%	0	0%	0	0%	21	100%
Jurupa Shuttle	302	223	74%	55	18%	24	8%	247	82%
TOTAL	1863	1711	92%	126	7%	26	1%	1737	93%

CONTRACTED
FIXED ROUTE ON TIME PERFORMANCE
(Percent On Time)



CONTRACTED DAR ON TIME PERFORMANCE FOR OCTOBER 2005

Dial-A-Ride	Total Line Checks	Number		Percent Late	Number Early	Percent Early	Percent On Time
		On Time	Number Late				
Calimesa - Yucaipa, Redlands	8	8	0	0%	0	0%	100%
Hemet - Homeland, Romoland, San Jacinto, Valle Vista, Winchester	3714	2967	363	10%	384	10%	80%
Jurupa - Belltown, Glen Avon, Pedley, Rubidoux, Mira Loma	464	341	107	23%	16	3%	73%
Lake Elsinore - Canyon Lake, Wildomar, Quail Valley	1059	883	121	11%	55	5%	83%
Moreno Valley - Canyon Springs, MAFB	2488	1925	490	20%	73	3%	77%
Murrieta - Temecula	1220	999	172	14%	49	4%	82%
Corona - Norco	1237	1001	187	15%	49	4%	81%
Perris - Mead Valley, Nuevo	1495	1231	180	12%	84	6%	82%
Sun City - Menifee	905	780	93	10%	32	4%	86%
Banning - Beaumont	3	3	0	0%	0	0%	100%
Grand Terrace - High Grove, Loma Linda, Colton, Redlands	219	159	45	21%	15	7%	73%
Riverside - Canyon Crest, Arnold Heights, Orangecrest, Woodcrest	2832	2113	624	22%	95	3%	75%
TOTAL	15,644	12,410	2,382	15%	852	5%	79%

CONTRACTED DAR ON TIME PERFORMANCE

