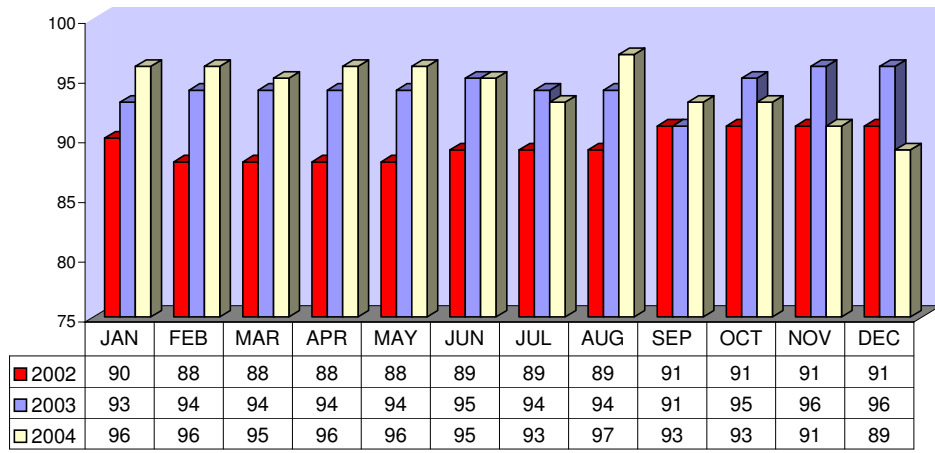


**Fixed Route On Time Performance For December 2004**

<i>Line</i>	<i>Total Line Checks</i>	<i>Number On Time</i>	<i>Percent On Time</i>	<i>Number Late</i>	<i>Percent Late</i>	<i>Number Ahead</i>	<i>Percent Ahead</i>	<i>Total On Time</i>	<i>Percent On Time</i>
1	648	529	82%	90	14%	29	4%	558	86%
9 (18A)	95	81	85%	12	13%	2	2%	83	87%
10	152	126	83%	26	17%	0	0%	126	83%
12	253	220	87%	29	11%	4	2%	224	89%
13	243	218	90%	22	9%	3	1%	221	91%
14	167	150	90%	17	10%	0	0%	150	90%
15	334	301	90%	25	7%	8	2%	309	93%
16	341	301	88%	14	4%	29	9%	330	97%
17	48	42	88%	6	13%	0	0%	42	88%
18	55	54	98%	0	0%	1	2%	55	100%
19	202	175	87%	23	11%	4	2%	179	89%
20	185	164	89%	18	10%	3	2%	167	90%
21	63	56	89%	6	10%	1	2%	57	90%
22	174	149	86%	19	11%	6	3%	155	89%
25	85	70	82%	14	16%	1	1%	71	84%
27	191	156	82%	21	11%	14	7%	170	89%
29	61	48	79%	12	20%	1	2%	49	80%
49	109	88	81%	20	18%	1	1%	89	82%
149	52	39	75%	5	10%	8	15%	47	90%
<b>TOTAL</b>	<b>3458</b>	<b>2967</b>	<b>86%</b>	<b>379</b>	<b>11%</b>	<b>115</b>	<b>3%</b>	<b>3082</b>	<b>89%</b>

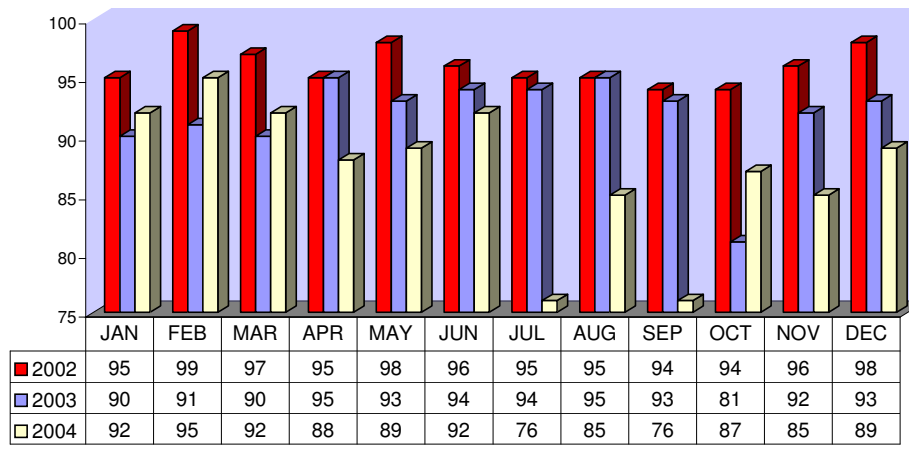
FIXED ROUTE ON TIME PERFORMANCE  
(Percent On Time)



**CONTRACTED DAR ON TIME PERFORMANCE FOR DECEMBER 2004**

<b>Dial-A-Ride</b>	<b>Total Line Checks</b>	<b>Number On Time</b>	<b>Percent On Time</b>	<b>Number Late</b>	<b>Percent Late</b>	<b>Number Early</b>	<b>Percent Early</b>	<b>Total On Time</b>	<b>Percent On Time</b>
<b>Calimesa</b> - Yucaipa, Redlands	13	10	77%	3	23%	1	8%	10	77%
<b>Hemet</b> - Homeland, Romoland, San Jacinto, Valle Vista, Winchester	3263	2930	90%	333	10%	394	12%	2930	90%
<b>Jurupa</b> - Belltown, Glen Avon, Pedley, Rubidoux, Mira Loma	949	828	87%	121	13%	61	6%	828	87%
<b>Lake Elsinore</b> - Canyon Lake, Wildomar, Quail Valley	1212	1093	90%	119	10%	74	6%	1093	90%
<b>Moreno Valley</b> - Canyon Springs, MAFB	2646	2380	90%	266	10%	169	6%	2380	90%
<b>Murrieta</b> - Temecula	1347	1197	89%	150	11%	70	5%	1197	89%
<b>Corona</b> - Norco	1243	1062	85%	181	15%	103	8%	1062	85%
<b>Perris</b> - Mead Valley, Nuevo	1620	1496	92%	124	8%	201	12%	1496	92%
<b>Sun City</b> - Menifee	903	822	91%	81	9%	33	4%	822	91%
<b>Banning</b> - Beaumont	8	8	100%	0	0%	4	50%	8	100%
<b>Grand Terrace</b> - High Grove, Loma Linda, Colton, Redlands	237	204	86%	33	14%	17	7%	204	86%
<b>Riverside</b> - Canyon Crest, Arnold Heights, Orangecrest, Woodcrest	2799	2431	87%	368	13%	179	6%	2431	87%
<b>TOTAL</b>	<b>16240</b>	<b>14461</b>	<b>89%</b>	<b>1779</b>	<b>11%</b>	<b>1306</b>	<b>8%</b>	<b>14461</b>	<b>89%</b>

**CONTRACTED DAR ON TIME PERFORMANCE**



**CONTRACTED FIXED ROUTE ON TIME PERFORMANCE FOR DECEMBER 2004**

Line	Total Line Checks	Number On Time	Percent On Time	Number Late	Percent Late	Number Early	Percent Early	Total On Time	Percent On Time
Route 3	25	21	84%	3	12%	1	4%	22	88%
Route 7	33	28	85%	4	12%	1	3%	29	88%
Route 8	39	35	90%	3	8%	1	3%	36	92%
Route 23	31	25	81%	6	19%	0	0%	25	81%
Route 24	37	32	86%	5	14%	0	0%	32	86%
Route 30	25	25	100%	0	0%	0	0%	25	100%
Route 31	33	28	85%	4	12%	1	3%	29	88%
Route 32	23	20	87%	3	13%	0	0%	20	87%
Route 33	26	25	96%	1	4%	0	0%	25	96%
Route 35	25	23	92%	1	4%	1	4%	24	96%
Route 36	21	21	100%	0	0%	0	0%	21	100%
Route 38	23	21	91%	2	9%	0	0%	21	91%
Route 40	21	19	90%	2	10%	0	0%	19	90%
Route 41	28	28	100%	0	0%	0	0%	28	100%
Route 42	25	24	96%	1	4%	0	0%	24	96%
Route 43	0	0	0%	0	0%	0	0%	0	0%
Route 50	15	15	100%	0	0%	0	0%	15	100%
Route 61	23	23	100%	0	0%	0	0%	23	100%
Route 74	23	20	87%	3	13%	0	0%	20	87%
Route 79	23	20	87%	3	13%	0	0%	20	87%
Route 202	23	23	100%	0	0%	0	0%	23	100%
Route 204	23	22	96%	1	4%	0	0%	22	96%
Route 206	23	23	100%	0	0%	0	0%	23	100%
Route 208	23	23	100%	0	0%	0	0%	23	100%
Jurupa Shut	251	205	82%	24	10%	22	9%	227	90%
<b>TOTAL</b>	<b>842</b>	<b>749</b>	<b>89%</b>	<b>66</b>	<b>8%</b>	<b>27</b>	<b>3%</b>	<b>776</b>	<b>92%</b>

CONTRACTED  
FIXED ROUTE ON TIME PERFORMANCE  
(Percent On Time)

